

## Historic, archived document

Do not assume content reflects current scientific knowledge, policies, or practices.



1927

# SEEDS IN BULK

WHOLESALE TRADE LIST  
AND TELEGRAPHIC CODE  
FOR MERCHANTS ONLY



Keep this List Handy. We may have  
occasion to Wire you in Code.

OFFERED BY  
**D. M. Ferry & Co.**  
Seedsman  
DETROIT - MICHIGAN

# SPECIAL NOTICE

**W**E HANDLE absolutely nothing that we do not believe to be the best obtainable. Our unequalled advantages for the production of the best seeds enable us to offer them to our customers at the lowest prices for which well grown and selected seeds true to name can be furnished.

Cheap goods in our line should be resolutely shunned by all dealers who want to supply seeds that will satisfy and make money for the planters and gardeners who trust them with their orders. Our seeds have behind them a history of constant success during the past seventy-one years and we continue to affirm—

*The best is always the cheapest;*

☞ These prices are made in anticipation of probable results of crops, therefore, we are not bound by them for any definite time or quantity and they are subject to change without notice.

**Seeds in bulk are sold outright and are not returnable.**

The prices are for delivery f. o. b. cars, Detroit, Mich., and do not include the cost of containers. When seamless cotton grain bags, boxes, or barrels are necessary for safe transportation, such packages are charged at value and are not returnable.

We do not supply less than 10 pounds at the 100 pound rate nor less than one-half pound at the pound rate nor less than one-half ounce at the ounce rate. Smaller quantities will be priced at higher rates.

The varieties in each class (for example, Wax Podded Beans) are usually arranged in their order of earliness.

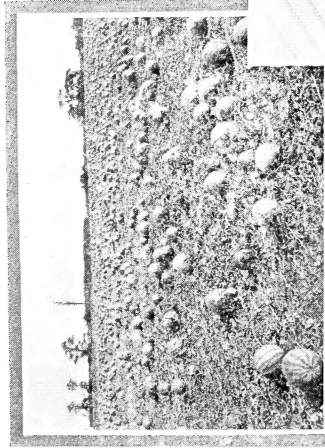
**TERMS** NET CASH, June 1st, 1927, without regard to date of purchase, or a discount of one per cent. per month for the unexpired time when paid before maturity. Grass and Clover Seeds, Miscellaneous Farm Seeds and Bird Seeds, net cash 10 days, without any discount whatever. Cash or satisfactory references should accompany orders from unknown correspondents.

We give no warranty, express or implied, as to description, purity, productiveness, or any other matter of any seeds we send out, and we will not be in any way responsible for the crop. If the purchaser does not accept the goods on these terms they are at once to be returned.

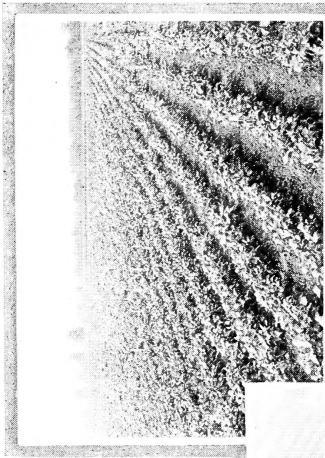
**D. M. FERRY & CO.**

DETROIT, MICH., January 10, 1927.

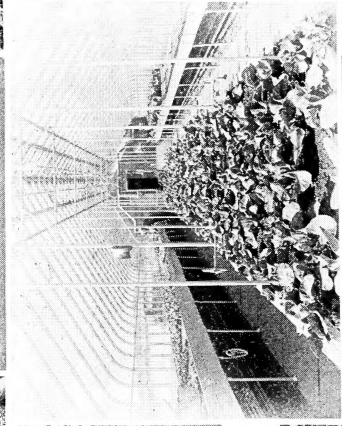
☞ In telegraphing, please use our CODE on page 49. Our telegraph cipher words should be used in *Telegrams only—not in Orders by Mail.*



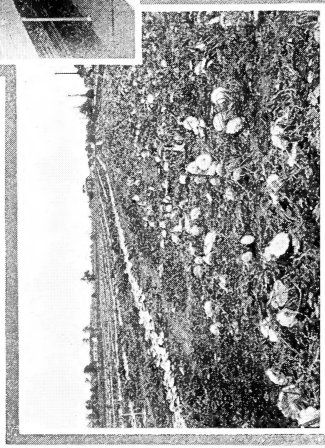
A CROP OF MELONS AT OAKVIEW



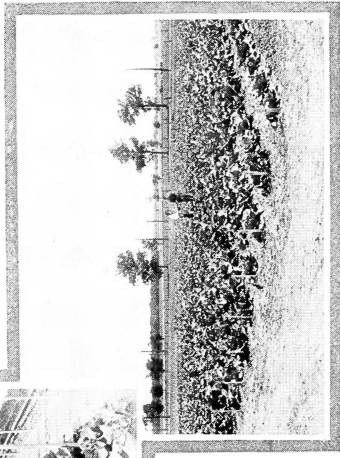
BEAN TRIAL



INDOOR CAULIFLOWER TRIAL



A CROP OF WHITE BUSH SQUASH AT OAKVIEW



CABBAGE TRIAL

Some of the Crops and Trials at Our Oakview Stock Seed Farm and Experimental Garden, Season of 1926.

# STANDARD SEEDS IN BULK

## ARTICHOKE

	Tel. cipher	Per lb.	10 lbs. or more per lb.
Green Globe.....	Bache.....	\$ 6.00	\$ 6.00

## ASPARAGUS

Conover's Colossal.....	Backus.....	Cannot offer	
Palmetto.....	Bacon.....	.60	.55
Washington.....	Baden.....	1.50	1.25

## ASPARAGUS ROOTS

	Tel. cipher	Per 1000
Conover's Colossal.....	Badger.....	\$ 5.50
Palmetto.....	Bagby.....	5.50
Washington.....	Bagwell.....	6.00

## BEANS—Dwarf or Bush

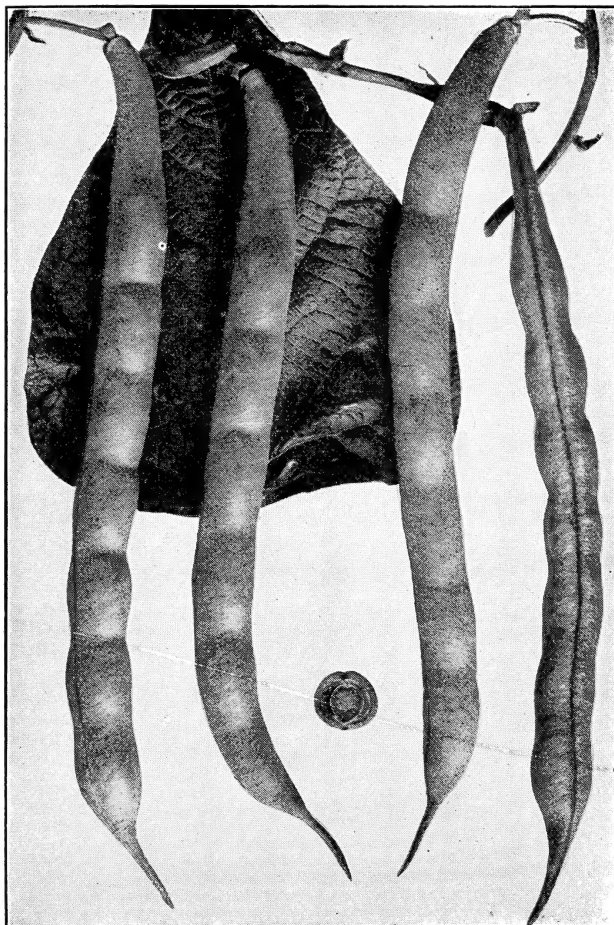
### WAX PODDED SORTS

	Tel. cipher	Per lb.	10 lbs. or more per lb.	600 lbs. or more per lb.
Challenge Black Wax.....	Bains.....	\$ .20	\$ .18	\$ .16
Ferry's Golden Wax.....	Baker.....	.20	.18	.16
Michigan White Wax.....	Balboa.....	.20	.18	.16
Grenell Rust Proof Wax.....	Balcom.....	.20	.17	.15
Refugee Wax.....	Baldi.....	.20	.18	.16
Keeney's Rustless Golden Wax.....	Beach.....	.20	.17	.15
Prolific Black Wax.....	Beagle.....	.20	.18	.16
Pencil Pod Wax.....	Beard.....	.20	.18	.16
Currie's Rust Proof Wax.....	Beason.....	.20	.17	.15
Sure Crop Wax.....	Becton.....	.20	.18	.16
Unrivalled Wax.....	Bedell.....	.20	.18	.16
Wardwell's Kidney Wax.....	Beekman.....	.23	.20	.18
Stringless Kidney Wax.....	Beelake.....	.27	.24	.22
Round Pod Kidney Wax.....	Beeler.....	.27	.24	.22
Davis Wax.....	Beetle.....	.20	.18	.16
Violet Flageolet Wax or Perfection Wax.....	Bejou.....	.20	.18	.16
Hodson Wax.....	Bellair.....	.20	.18	.16
Crystal White Wax.....	Bellamy.....	.23	.20	.18

**BEANS—Dwarf or Bush—Continued**

GREEN PODDED SORTS

	Tel. cipher	Per lb.	10 lbs. or more per lb.	600 lbs. or more per lb.
Extra Early Refugee .....	Benbow...	\$ .18	\$ .16	\$ .15
Bountiful .....	Benbush...	.18	.16	.15
Full Measure .....	Bendena...	.18	.16	.15
Red Valentine .....	Benfer....	.18	.16	.14
Black Valentine .....	Bengal....	.18	.15	.13
Stringless Green Pod .....	Benleo....	.18	.16	.15
Giant Stringless Green Pod ( <i>See cut</i> ) ..	Benoit....	.20	.18	.16



Giant Stringless Green Pod

## BEANS—Dwarf or Bush—Continued

## GREEN PODDED SORTS

	Tel. cipher	Per lb.	10 lbs. or more per lb.	600 lbs. or more per lb.
Tennessee Green Pod	Benrud	\$ .18	\$ .16	\$ .15
Dwarf Horticultural	Bentley	.18	.16	.15
Refugee or Thousand to One. Remarkably productive. Stands handling well and is a very popular variety with canners.	Benwood	.18	.15	.14
Rogers' Stringless Refugee	Benzien			Sold out
Early Marrow Pea or White Navy	Berdan	.12	.10	.10
Large White Marrow or Mountain	Berea			Sold out
White Kidney	Bergoo	.15	.13	.12

## DWARF LIMAS

Henderson's Bush Lima	Bethune	.20	.16	.14
Burpee's Improved Bush Lima	Betsey	.23	.20	.18
Dwarf Large White Lima ( <i>Burpee's</i> )	Beulah	.20	.18	.16
Fordhook Bush Lima	Beury	.25	.22	.20

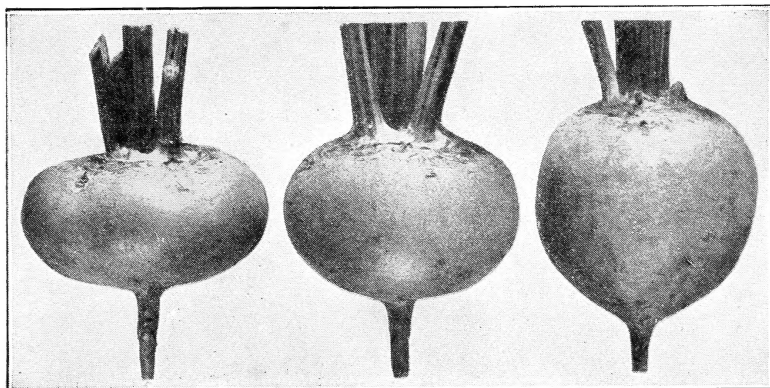
## Pole or Running

White Creaseback	Bevan	.18	.16	.15
Kentucky Wonder. (Old Homestead). Very productive and of the best quality for snaps	Bevier	.18	.15	.14
Nancy D.	Bexar	.20	.18	.17
St. Louis Perfection White. Early, very productive, white seeded; unsurpassed in its class	Bias	.18	.16	.15
Red Speckled Cut Short	Biddle	.18	.15	.15
Scotia or Striped Creaseback. Especially suitable for growing on corn for snaps	Bigelow	.18	.16	.15
Dutch Case Knife	Bingo	.20	.17	.17
Kentucky Wonder Wax. Similar to Kentucky Wonder, but pods are attractive light yellow	Biola	.22	.20	.18
Golden Cluster Wax	Bird	.22	.20	.18
Improved London Horticultural	Birta	.20	.18	.17
London Horticultural or Speckled Cranberry	Birome	.20	.18	.17
Lazy Wife	Bisbe	.18	.16	.15
Scarlet Runner ( <i>See flower seed section</i> )				

## POLE LIMAS

Seibert's Early Lima	Biscoe	.23	.20	.18
Small White Lima, Carolina or Sieva	Bishop	.20	.18	.16
Ideal Pole Lima	Bison	.23	.20	.18
King of the Garden Lima	Bivins	.23	.20	.18
Carpinteria Pole Lima. Very large beans with greenish tint, and very best quality	Blade	.23	.20	.18
Detroit Mammoth Lima	Blaney	.25	.22	.20
Large White Lima	Blanks	.23	.20	.18





Extra Early Egyptian, Crosby's Egyptian and Detroit Dark Red

### BEEET

	Tel. cipher	Per lb.	50 lbs. or more per lb.
Extra Early Egyptian Blood Turnip. (See cut) . . .	Blanton . . .	\$ .45	\$ .45
Crosby's Egyptian (See cut) . . . . .	Blazer . . . . .	.50	.45
Detroit Dark Red. Tested seed, our own superior strain (See cut) . . . . .	Block . . . . .	.65	.60
Early Eclipse . . . . .	Blond . . . . .	.40	.35
Edmand's Early Blood Turnip . . . . .	Bloom . . . . .	.40	.35
Early Blood Turnip, improved . . . . .	Blox . . . . .	.40	.35
Ferry's Half Long Blood . . . . .	Blue . . . . .	.60	.50
Long Dark Blood in Ground . . . . .	Blunt . . . . .	.40	.35
Long Dark Blood above Ground . . . . .	Bodie . . . . .	.50	.45
Swiss Chard. Silver Leaf . . . . .	Brazoria . . . . .	.45	.40
Swiss Chard. Lucullus . . . . .	Breathit . . . . .	.50	.50

### MANGEL WURZEL

Giant Feeding Sugar Beet or Half Sugar Mangel. For Stock Feeding . . . . .	Brooks . . . . .	.20	.18
Mammoth Long Red . . . . .	Buncombe . . . . .	.20	.18
Yellow Leviathan . . . . .	Burke . . . . .	.20	.19
Golden Tankard . . . . .	Burnett . . . . .	.25	.22

### SUGAR BEEET

Klein Wanzleben . . . . .	Bristol . . . . .	.30	.30
---------------------------	-------------------	-----	-----

### BROCCOLI

	Tel. Cipher	Per lb.	10 lbs. or more per lb.
Early Large White French . . . . .	Butts . . . . .	\$3.00	\$2.75

### BRUSSELS SPROUTS

Improved Half Dwarf . . . . .	Cabell . . . . .	1.25	1.10
Long Island Improved . . . . .	Cache . . . . .	1.50	1.40



Copenhagen Market

**CABBAGE**

FIRST EARLY SORTS

	Tel. cipher	Per lb.	25 lbs. or more per lb.
<b>Early Jersey Wakefield.</b> The earliest and surest heading of first early cabbages.....	<b>Caddo</b> .....	\$ 2.00	\$ 1.75
<b>Copenhagen Market</b> (See cut).....	<b>Callahan</b> .....	3.00	2.50
<b>Charleston or Large Wakefield</b> .....	<b>Calhoun</b> .....	2.00	1.75

## SECOND EARLY AND INTERMEDIATE SORTS

<b>Early Dwarf Flat Dutch</b> .....	<b>Camden</b> .....	1.50	1.25
<b>Glory of Enkhuizen</b> .....	<b>Cambria</b> .....	2.50	2.40
<b>All Head Early</b> .....	<b>Camp</b> .....	1.75	1.50
<b>Early Winnigstadt</b> .....	<b>Cannon</b> .....	1.75	1.50
<b>Succession</b> .....	<b>Carter</b> .....	1.75	1.50
<b>Midseason Market</b> .....	<b>Cargile</b> .....	3.00	2.75
<b>All Seasons</b> .....	<b>Carbon</b> .....	1.75	1.50
<b>Wisconsin All Seasons (Yellows Resistant)</b> .....	<b>Cardale</b> .....	3.00	2.50
<b>Stein's Early Flat Dutch</b> .....	<b>Carlisle</b> .....	2.00	1.75

## LATE OR AUTUMN AND WINTER SORTS

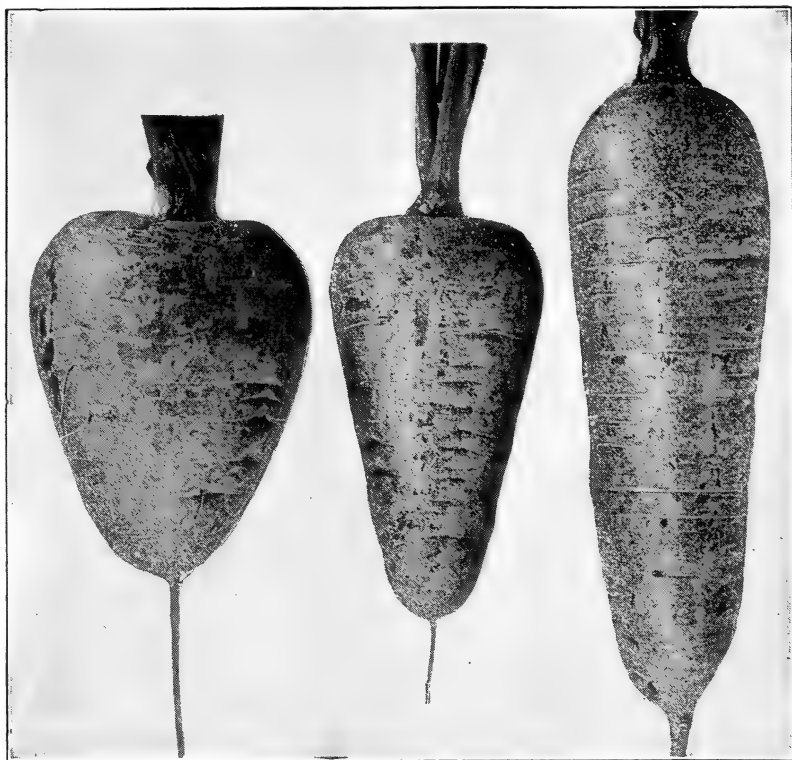
<b>Volga</b> .....	<b>Cascade</b> .....	1.50	1.40
<b>Surehead</b> .....	<b>Casey</b> .....	1.50	1.25
<b>Ferry's Premium Late Flat Dutch</b> .....	<b>Catoosa</b> .....	1.50	1.25
<b>Hollander or Danish Ball Head.</b> Our own strain and growth.....	<b>Chatham</b> .....	7.50	7.00
<b>Hollander or Danish Ball Head.</b> Choice imported seed.....	<b>Chase</b> .....	2.75	2.50
<b>Wisconsin No. 8</b> .....	<b>Chariton</b> .....	5.00	4.50
<b>Mammoth Rock Red</b> .....	<b>Chemung</b> .....	2.00	1.75
<b>Savoy, Improved American</b> .....	<b>Cherry</b> .....	1.75	1.50

## CHINESE IMPROVED or PE-TSAI. Also called

Celery Cabbage. Grows like Cos Lettuce.....	<b>Cheshire</b> .....	1.25	1.25
---	-----------------------	------	------

<b>Hollander.</b> Choice Imported Seed.....	2 00	1 75
<b>Wisconsin No. 8</b> .....	2 75	2 50

PRICE CORRECTION



Guerande, Chantenay and Danvers

## CARROT

	Tel. cipher	Per lb.	50 lbs. or more per lb.
<b>French Forcing, Earliest Short Horn</b> .....	<b>Chester</b> ..	\$ .75	\$ .70
<b>Early Scarlet Horn</b> .....	<b>Chicot</b> ..	.70	.65
<b>Carentan, coreless</b> .....	<b>Chippewa</b>	.75	.70
<b>Nantes, Stump-Rooted</b> .....	<b>Choctaw</b> ..	.70	.65
<b>Chantenay (See cut)</b> .....	<b>Chowan</b> ..	.70	.65
<b>Guerande or Ox Heart (See cut)</b> .....	<b>Clare</b> .....	.60	.55
<b>Danvers. Our strain is unsurpassed (See cut)</b> .....	<b>Clark</b> .....	.60	.55
<b>Improved Long Orange</b> .....	<b>Clatsop</b> ..	.50	.45
<b>Ferry's Improved Short White</b> .....	<b>Clayton</b> ..	.45	.40



Early Snowball

## CAULIFLOWER

Our stocks of Cauliflower are all of the finest quality and are produced by the most experienced growers in Europe, in such localities as are best suited to their proper development and the greatest care is taken to save seed from perfectly developed plants only.

	Tel. cipher	Per oz.	Per lb.	5 lbs. or more per lb.
<b>Early Snowball.</b> This is unquestionably the earliest maturing strain of the true short leaved Snowball type. ( <i>See cut</i> )...	<b>Clermont.</b>	\$ 1.25	\$18.00	\$16.00
<b>Extra Early Dwarf Erfurt.</b> A remarkably sure heading early cauliflower. It is nearly as early as Snowball.	<b>Clinton...</b>	1.15	16.00	14.00
<b>Danish Giant, Dry Weather.</b> Especially recommended for growing in the open ground. In localities where other varieties fail to head on account of hot, dry weather, this sort will usually give excellent results.	<b>Coahoma.</b>	1.25	18.00	16.00
Large Algiers	<b>Coconino.</b>	.60	7.00	6.50
Veitch's Autumn Giant	<b>Coffee</b>	.40	5.00	4.75



Golden Yellow Self Blanching  
**CELERY**

	Tel. cipher	Per lb.	5 lbs. or more per lb.
<b>Golden Yellow Self Blanching</b> (true, original strain). Oz. 50c.....	<b>Coke</b> .....	\$ 6.00	\$ 5.50
<b>Wonderful</b> .....	<b>Colbert</b> ...	16.00	15.00
<b>White Plume</b> .....	<b>Coleman</b> ...	2.00	1.75
<b>Easy Blanching</b> ..	<b>Colfax</b> .....	6.00	5.50
<b>Columbia</b> .....	<b>Colleton</b> ..	3.50	3.25
<b>Giant Pascal</b> .....	<b>Comanche</b>	2.50	2.25
<b>Winter Reliance</b> . A very desirable late keeping variety.....	<b>Conejos</b> ...	2.50	2.25
<b>French's Success</b> .....	<b>Converse</b> ..	2.50	2.25
Soup or Cutting.....	<b>Cooper</b> ...	.75	.70
Celery Seed ( <i>for flavoring</i> ).....	<b>Coosa</b> ....	.30	.30
<b>CELERIAC</b> , Large Smooth Prague.....	<b>Cortland</b> ..	1.25	1.25

## CHERVIL

	Tel. cipher	Per lb.	5 lbs. or more per lb.
Curled .....	Costilla	\$ 1.50	\$ 1.50

## CHICORY

	Tel. cipher	Per lb.	10 lbs. or more per lb.
Large Rooted or Coffee .....	Coweta	\$ 1.00	\$ .95
Witloof or French Endive .....	Cowley	1.25	1.15
Small Rooted or Radichetta .....	Cowpens	1.25	1.15

## CHIVES

	Tel. cipher	Per oz.
Allium Schoenoprasum .....	Cowlitz	\$ .50

## COLLARDS

	Tel. cipher	Per lb.	10 lbs. or more per lb.
Georgia, Southern or Creole .....	Crane	\$ .60	\$ .55

## CORN

## SHELLED

CAUTION—Sweet Corn in bulk, even after being thoroughly cured, will often gather moisture and spoil, particularly if it has been exposed to a low temperature. To prevent this it should be taken out of the bags as soon as received and spread in a dry place.

## SWEET OR TABLE VARIETIES

	Tel. cipher	Per lb.	10 lbs. or more per lb.	500 lbs. or more per lb.
Alpha .....	Craven	\$ .18	\$ .16	\$ .15
Mammoth White Cory .....	Crawford	.18	.15	.13
Crosby's Early .....	Cross	.18	.15	.14
Golden Bantam (See cut, page 11) .....	Culpeper	.18	.16	.15
Charlevoix (See cut, page 11) .....	Cuming	.18	.16	.15
Early Minnesota .....	Curry	.18	.15	.14
Kendel's Early Giant .....	Cuyahoga	.18	.15	.13
Early Sweet or Sugar .....	Dakota	.18	.15	.13
Black Mexican .....	Darke	.18	.15	.14
Ferry's Early Evergreen .....	Davidson	.18	.15	.14
Country Gentleman .....	Davis	.18	.16	.15
Stowell's Evergreen .....	Dawes	.18	.15	.14
Mammoth .....	Day	.18	.16	.15

## FIELD VARIETIES

Extra Early Adams .....	Decatur	.10	.08½	.08
Early Adams or Burlington .....	Dekalb	.10	.07	.06½
Early Golden Dent or Pride of the North .....	Denver	.08	.07	.05

## POP CORN

Black Beauty (shelled) .....	Desha			Sold out
White Rice (shelled) .....	Deuel	.15	.10	.09
Japanese Hulless (shelled) .....	Dewar			Sold out
Golden Hulless (new) .....	Dexter	.18	.14	.14



**Golden Bantam**



**Charlevoix**

## CORN SALAD or Fetticus

	Tel. cipher	Per lb.	5 lbs. or more per lb.
Large Seeded, Large Leaved...	Dewitt....	\$ .50	\$ .50

## CRESS

Curled or Pepper Grass.....	Dickey....	.30	.30
True Water.....	Dodge....	2.25	2.25

## CUCUMBER

	Tel. cipher	Per lb.	50 lbs. or more per lb.
Early Cluster....	Doniphan	\$ .60	\$ .55
Early Short Green or Early Frame	Dooly....	.60	.55
Snow's Pickling	Drew.....	.60	.55
<b>Chicago</b>			
Pickling.....	Dubois....	.60	.55
Boston Pickling...	Dukes....	.60	.55
Jersey Pickling...	Dunklin..	.60	.55
<b>Early White</b>			
Spine.....	Dupage....	.60	.55
Klondike.....	Dutchess..	.65	.60
Early Fortune...	Dutro....	.65	.60
Davis Perfect...	Dyer.....	.65	.60
<b>Evergreen White</b>			
Spine.....	Duval....	.80	.75
<b>Improved Long Green.</b> We be- lieve the stock we offer has no equal ( <i>See cut</i> )...	Eddy....	1.50	1.25
Small Gherkin ( <i>for pickles</i> )....	Edmonson	1.00	.90

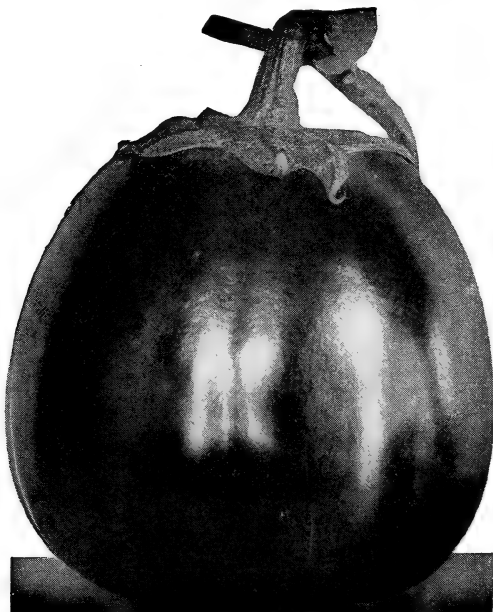
## DANDELION

	Tel. cipher	Per lb.	5 lbs. or more per lb.
Cultivated or French Common	Edwards..	\$ 1.00	\$ 1.00
Improved Thick Leaved.....	Eldorado	4.00	4.00



Improved Long Green





Egg Plant, D. M. Ferry & Co.'s Improved Large Purple

### EGG PLANT

	Tel. cipher	Per lb.	5 lbs. or more per lb.
<b>Black Beauty</b> .....	Ellis.....	\$ 4.00	\$ 3.75
Large New York Purple.....	Elmore.....	3.50	3.25
<b>D. M. Ferry &amp; Co.'s Improved Large Purple, spineless</b> .....	Emanuel.....	3.50	3.25

### ENDIVE

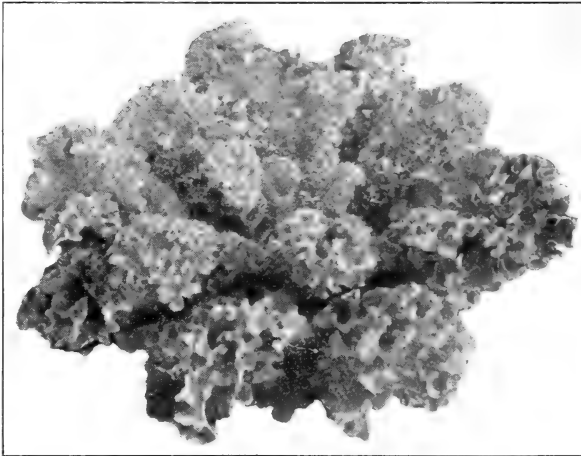
	Tel. cipher	Per lb.	25 lbs. or more per lb.
<b>Large Green Curled</b> .....	Emmet.....	\$ .75	\$ .60
Moss Curled.....	Erath.....	.75	.60
Ever White Curled.....	Estill.....	.75	.60
Broad Leaved Batavian or Escarolle.....	Falls.....	.75	.60

### FENNEL

	Tel. cipher	Per lb.	5 lbs. or more per lb.
Florence.....	Schuyler..	\$ .90	\$ .90

### GARLIC

Bulbs.....	Faulkner.....	.30	
------------	---------------	-----	--



Kale, Siberian

## HORSE RADISH

	Tel. cipher	Per 100
Small Roots, Maliner-Kren.....	<b>Fentress</b> ..	\$ 1.25

## KALE or Borecole

	Tel. cipher	Per lb.	25 lbs. or more per lb.
Tall Green Curled Scotch.....	<b>Fergus</b> ....	\$ .75	\$ .70
<b>Dwarf Curled Scotch</b> .....	<b>Finney</b> ....	.75	.70
Dwarf Purple.....	<b>Fluvanna</b> ..	1.00	.90
<b>Siberian</b> or Sprouts. ( <i>See cut.</i> ).....	<b>Fleming</b> ..	.60	.55

## KOHL RABI

	Tel. cipher	Per lb.	10 lbs. or more per lb.
<b>Early White Vienna</b> , <i>extra for forcing</i> .....	<b>Forest</b> ..	\$2.00	\$1.75
Early Purple Vienna, <i>very early</i> .....	<b>Foster</b> ..	2.00	1.75
Large Green.....	<b>Franklin</b> ..	1.50	1.25

## LEEK

London Flag.....	<b>Fremont</b> ..	1.50	1.25
<b>Large American Flag</b> .....	<b>Frio</b> .....	1.50	1.25
Large Rouen.....	<b>Furnas</b> ..	1.50	1.25
<b>Monstrous Carentan</b> .....	<b>Gallatin</b> ..	2.00	1.75



Big Boston

## LETTUCE

### CABBAGE OR HEADING VARIETIES

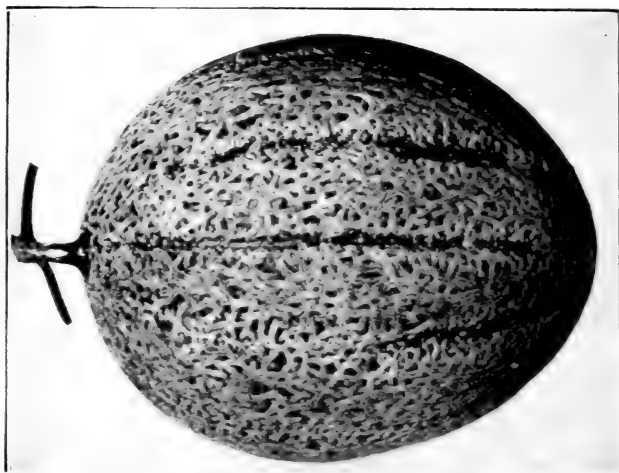
	Tel. cipher	Per lb.	25 lbs. or more per lb.
<b>May King, w. s.</b> .....	<b>Garfield</b> ..	\$ .85	\$ .80
<b>Salamander, b. s.</b> .....	<b>Gaston</b> ..	.75	.70
<b>Mammoth Black Seeded Butter</b> .....	<b>Gentry</b> ..	.85	.80
<b>Unrivald Summer, w. s.</b> .....	<b>Giles</b> ..	1.00	.95
<b>Big Boston, w. s. (See cut)</b> .....	<b>Gilliam</b> ..	1.00	.95
California Cream Butter or Royal Summer Cabbage, <i>brown seed</i> .....	<b>Gilpin</b> ..	.75	.70
Los Angeles (New York, or Wonderful), w. s. ....	<b>Goliad</b> ..	1.50	1.25
Hanson, w. s. ....	<b>Gordon</b> ..	.75	.70

### CURLED OR LOOSE LEAVED VARIETIES

<b>Grand Rapids, b. s.</b> .....	<b>Gove</b> ..	.85	.80
Detroit Market Gardeners' Forcing, w. s. ....	<b>Grafton</b> ..	.85	.80
Simpson's Early Curled, w. s. ....	<b>Grainger</b> ..	.75	.70
<b>Ferry's Early Prize Head, w. s.</b> .....	<b>Grant</b> ..	.85	.80
<b>Black Seeded Simpson</b> .....	<b>Graves</b> ..	.85	.80

---

**Early White Self-Folding Cos, w. s. (Romaine)**..Gregg . . . . 1.00 .90



Gold Nugget

## MUSK MELON

## GREEN FLESHED VARIETIES

	Tel. cipher	Per lb.	50 lbs. or more per lb.
Extra Early Hackensack . . . . .	Gunnison	\$ .75	\$ .70
Netted Gem or Rocky Ford . . . . .	Gwinnett.	.70	.65
10-25, Salmon Tint . . . . .	Hale . . . . .	.85	.80
Hackensack . . . . .	Hansford . . . . .	.65	.60

## ORANGE FLESHED VARIETIES

<b>Emerald Gem.</b> For home use and near markets it leads all other kinds on account of its sweetness and convenient size . . . . .	Harford . . . . .	.75	.70
<b>Daisy</b> . . . . .	Harjo . . . . .	.85	.80
<b>Tip Top</b> . . . . .	Harnett . . . . .	.75	.70
<b>Extra Early Osage.</b> Fully a week earlier than Osage, a little smaller, more nearly round and with more netting . . . . .	Hart . . . . .	.80	.75
Petoskey or Paul Rose . . . . .	Hartley . . . . .	.75	.70
<b>Gold Nugget.</b> Unexcelled in flavor. We consider this the best small shipping melon yet introduced (See cut) . . . . .	Haskell . . . . .	.75	.70
<b>Improved Hoodoo or Hearts of Gold.</b> A splendid orange fleshed variety of medium size. By many considered the finest shipping melon . . . . .	Hays . . . . .	.80	.75
<b>Defender.</b> Originated and introduced by us in 1901. We believe it identical with Burrell's Gem . . . . .	Heard . . . . .	.80	.75
<b>Osage.</b> Our stock is unsurpassed . . . . .	Hennepin . . . . .	.85	.80

## WINTER MUSK MELONS

<b>Honey Ball</b> . . . . .	Hermosa . . . . .	1.25	1.25
<b>Honey Dew</b> . . . . .	Hernando . . . . .	1.00	.90
<b>Cassaba, Golden Beauty</b> . . . . .	Hickory . . . . .	1.00	.90

## WATER MELON

	Tel. cipher	Per lb.	50 lbs. or more per lb.
Harris' Earliest.....	Hidalgo...	\$ .45	\$ .40
Ferry's Peerless.....	Hocking.....	.45	.40
Round Light Icing.....	Holt.....	.45	.40
Long Light Icing.....	Hooker.....	.45	.40
Irish Grey.....	Hopkins.....	.50	.45
Monte Cristo or Kleckley's Sweets (See cut).....	Houston.....	.50	.45
Florida Favorite.....	Howell.....	.45	.40
Tom Watson.....	Humacao.....	.50	.45
Chilian White Seeded.....	Ida.....	.50	.45
Chilian Black Seeded.....	Inyo.....	.50	.45
Sweet Heart.....	Idaho.....	.45	.40
Gypsy or Georgia Rattlesnake.....	Ingham.....	.45	.40
Citron, for preserving (red seed).....	Iredell.....	.50	.45



Monte Cristo or Kleckley's Sweets

## MUSHROOM SPAWN

	Tel. cipher	Per brick
Spore Culture. Per 100 bricks (each about 1¼ lbs.)		
\$16.00.....	Iroquois..	\$ .20

## MUSTARD

	Tel. cipher	Per lb.	50 lbs. or more per lb.
White English.....	Isabella..	\$ .20	\$ .20
Southern Giant Curled.....	Island.....	.30	.28
Large Smooth Leaved.....	Isanti.....	.30	.28
Florida Broad Leaf.....	Isett.....	.50	.45

## NASTURTIUM

Tall Mixed Garden.....	Itasca....	.50	.45
------------------------	------------	-----	-----

## OKRA or Gumbo

	Tel. cipher	Per lb.	25 lbs. or more per lb.
Dwarf Green Prolific.....	Jabez....	\$ .35	\$ .30
White Velvet.....	Jackson..	.35	.30
Dwarf Long Pod, Green.....	James....	.35	.32
Perkin's Mammoth Long Pod.....	Jardine..	.35	.30

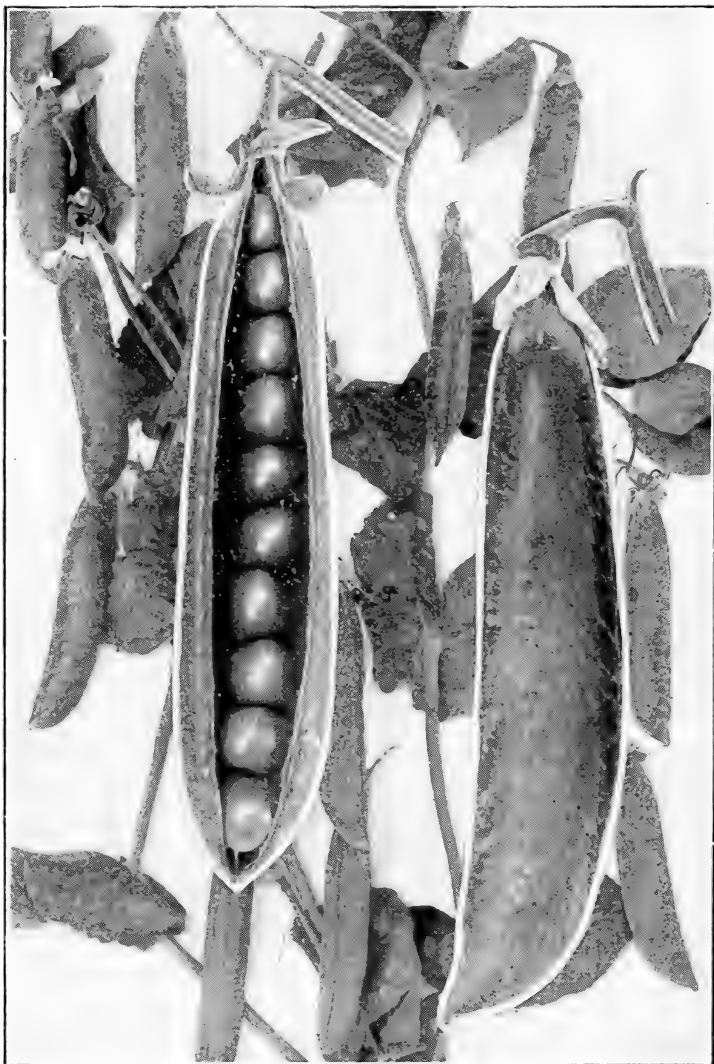
## ONION

Our onion seeds are grown from the choicest selected bulbs raised from pedigree seed of the choicest selected types. You may find onion seed offered for less than ours. You cannot find any of better quality, no matter how high the prices asked.

	Tel. cipher	Per lb.	100 lbs. or more per lb.
Extra Early Red	Johnston	\$ 1.25	\$ 1.15
Large Red Wethersfield	Juneau	1.25	1.10
Southport Red Globe	Kalawao	1.50	1.40
Large Yellow Dutch or Strasburg	Kanabec	1.25	1.15
Yellow Danvers	Kane	1.25	1.15
Yellow Globe Danvers ( <i>See cut</i> )	Karnes	1.50	1.40
Michigan Yellow Globe	Kauai	1.50	1.40
Southport Yellow Globe	Keith	1.60	1.50
Mammoth Yellow Spanish or Prizetaker	Kenosha	1.50	1.40
White Portugal ( <i>American Silverskin</i> )	Kenton	2.00	1.85
White Globe	Kern	3.00	2.75
IMPORTED VARIETIES			
Extra Early Barletta	Keokuk	2.00	1.80
Queen, <i>very early</i>	Kershaw	2.00	1.80
Early Neapolitan Marzajola	Keweenaw	1.50	1.25
Giant White Italian Tripoli	Kingman	1.50	1.25
Mammoth Silver King	Kiowa	1.50	1.25



Yellow Globe Danvers



Gradus

(See page 20)

## PARSLEY

	Tel. cipher	Per lb.	25 lbs. or more per lb.
Plain .....	<b>Kittitas</b> ..	\$ .40	\$ .35
<b>Champion Moss Curled</b> .....	<b>Klamath</b> ..	.50	.45
Short Thick Rooted .....	<b>Knox</b> .....	.50	.45

## PARSNIP

Long White Dutch or Sugar .....	<b>Kossuth</b> ..	.35	.30
<b>Hollow Crown</b> or Guernsey .....	<b>Laclede</b> ..	.35	.30

## PEAS

Wrinkled varieties marked thus\*.

## FIRST EARLY AND EARLY SORTS

	Tel. cipher	Per lb.	10 lbs. or more per lb.	600 lbs. or more per lb.
Extra Early .....	<b>Lagrange</b> ..	\$ .16	\$ .13	\$ .12
<b>Alaska</b> .....	<b>Lamar</b> .....	.16	.13	.12
Rogers' Winner .....	<b>Lamb</b> .....	.16	.13	.12
* <b>Thomas Laxton</b> .....	<b>Lamoille</b> ..	.18	.16	.15
* <b>Gradus</b> . (See cut, page 19) .....	<b>Lancaster</b> ..	.18	.15	.14
*American Wonder (Nott's Excelsior) .....	<b>Langlade</b> ..	.17	.15	.14
*Nott's Excelsior .....	<b>Laporte</b> .....	.17	.15	.14
* <b>Laxtonian</b> .....	<b>Larne</b> .....	.25	.20	.20
*Premium Gem (Improved Little Gem) .....	<b>Lasalle</b> .....	.16	.14	.13
*Little Marvel .....	<b>Latimer</b> .....			Crop failed

## SECOND EARLY SORTS

* <b>McLean's Advancer</b> .....	<b>Latah</b> .....	.16	.13	.13
*Yorkshire Hero .....	<b>Laurel</b> .....	.16	.13	.13
*Bliss' Everbearing .....	<b>Lavaca</b> .....	.16	.13	.13
* <b>The Admiral</b> .....	<b>Lebanon</b> ..	.15	.12	.12
* <b>Green Admiral</b> .....	<b>Lehigh</b> .....	.15	.12	.12
* <b>Telephone</b> .....	<b>Lemhi</b> .....	.18	.15	.14
* <b>Admiral Beatty</b> .....	<b>Lenawee</b> ..	.18	.15	.14
* <b>Alderman</b> .....	<b>Leslie</b> .....	.18	.15	.14

## LATER SORTS

* <b>Improved Stratagem</b> .....	<b>Letcher</b> .....			Sold out
* <b>Dwarf Champion</b> .....	<b>Liberty</b> .....	.17	.14	.14
*Horford's Market Garden .....	<b>Lipscomb</b> ..	.16	.13	.13
Melting Sugar ( <i>edible pods</i> ) .....	<b>Logan</b> .....	.20	.18	.17
Giant Butter, ( <i>edible Pod</i> ) .....	<b>Lonoke</b> .....	.22	.20	.19
* <b>Champion of England</b> .....	<b>Lorain</b> .....	.16	.13	.13
Large White Marrowfat .....	<b>Louisa</b> .....	.13	.10	.10
Large Blackeye Marrowfat .....	<b>Lowndes</b> ..	.13	.10	.10



## PEPPER

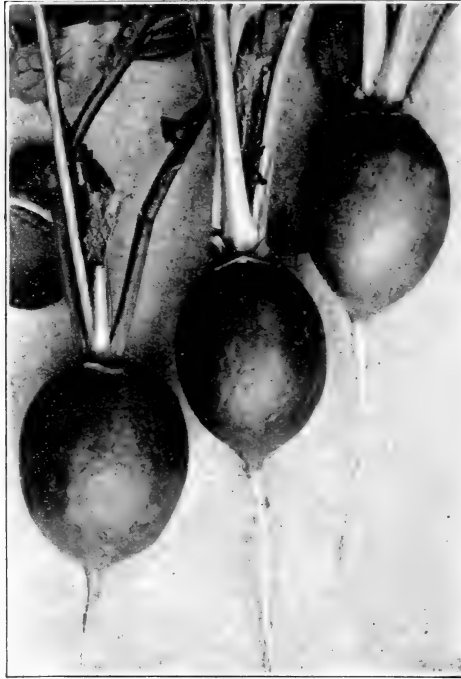
	Tel. cipher	Per lb.	25 lbs. or more per lb.
<b>Tabasco</b> .....	<b>Lyden</b> .....	\$ 5.00	\$ 4.50
Red Cherry.....	<b>Lyman</b> ...	3.50	3.25
Red Chili.....	<b>Lyon</b> .....	3.50	3.25
Long Red Cayenne.....	<b>McCook</b> ..	3.00	2.75
<b>Bell or Bull Nose</b> .....	<b>McKean</b> ..	3.50	3.25
<b>Royal King</b> .....	<b>McKenzie</b>	3.50	3.25
<b>Ruby King</b> .....	<b>McKinley</b> .	3.50	3.25
Pimiento.....	<b>McLeod</b> ..	3.50	3.25
<b>Giant Crimson</b> .....	<b>McLennan</b> .....	Sold Out	
<b>Chinese Giant</b> .....	<b>McMahan</b> .....	Sold Out	
Large Sweet Spanish.....	<b>McMinn</b> .....	Sold Out	



Pumpkin, Sweet Cheese

## PUMPKIN

	Tel. cipher	Per lb.	25 lbs. or more per lb.
<b>Pie</b> .....	<b>McNairy</b> ..	\$ .50	\$ .45
<b>Sugar or New England Pie</b> .....	<b>Macomb</b> ..	.50	.45
Large Yellow.....	<b>Macoupin</b>	.35	.30
Green Striped Cushaw.....	<b>Madera</b> ..	.75	.65
Sweet Cheese.....	<b>Madison</b> ..	.35	.30



Early Scarlet Globe

**RADISH**

	Tel. cipher	Per lb.	100 lbs. or more per lb.
		\$	\$
Early Deep Scarlet Turnip.....	Malheur..	.50	.45
Blood Red Turnip, Forcing.....	Mahaska..	.50	.45
<b>Early Scarlet Globe</b> ( <i>See cut</i> ).....	Manistee..	.60	.55
Early Scarlet Turnip, White Tipped, Forcing.....	Marengo..	.50	.45
Early Deep Scarlet, Olive Shaped.....	Maries.....	.50	.45
Early White Turnip.....	Martin.....	.50	.45
Early Scarlet Turnip.....	Marion.....	.45	.40
<b>Early Scarlet Turnip, White Tipped</b> .....	Marlboro..	.50	.45
<b>French Breakfast</b> .....	Massac.....	.45	.40
<b>Crimson Giant Turnip</b> .....	Maui.....	.45	.40
Half Long Deep Scarlet.....	Maverick..	.50	.45
Long Brightest Scarlet, White Tipped.....	Mayes.....	.45	.40
<b>Long Scarlet</b> .....	Meagher..	.45	.40
Wood's Early Frame.....	Medina.....	.45	.40
Cincinnati Market.....	Meigs.....	.45	.40
<b>Improved Chartier</b> .....	Meniffee..	.45	.40
<b>Early Golden Yellow Oval</b> .....	Mercer.....	.50	.45
<b>Icicle</b> .....	Meyer.....	.45	.40
Long White Vienna.....	Mesa.....	.45	.40
Golden Globe.....	Mills.....	.50	.45
Large White Summer Turnip.....	Miner.....	.50	.45
<b>White Strasburg</b> .....	Millard..	.45	.40
Early White Giant Summer.....	Midland..	.50	.45

## RADISH—Continued

## WINTER VARIETIES

	Tel. cipher	Per lb.	100 lbs. or more per lb.
<b>Scarlet China</b> .....	<b>Mitchell</b> ..	\$ .45	\$ .40
<b>Celestial</b> . Roots long, cylindrical with beautiful white skin and flesh; quality excellent.....	<b>Modoc</b> ....	.50	.45
California Mammoth White China.....	<b>Mono</b> .....	.50	.45
Round Black Spanish.....	<b>Monroe</b> ...	.50	.45
<b>Half Long Black Winter</b> . Roots half long, grayish black; flesh white, crisp, pungent and well flavored	<b>Montcalm</b>	.55	.50
Long Black Spanish.....	<b>Montour</b> ..	.45	.40



Scarlet China



Celestial

## RHUBARB

	Tel. cipher	Per lb.	100 lbs. or more per lb.
Rhubarb or Pie Plant.....	<b>Moore</b> .....	\$ .75	\$ .75
Rhubarb or Pie Plant Roots. \$7.50 per 100.....	<b>Morgan</b> .....		

## ROQUETTE

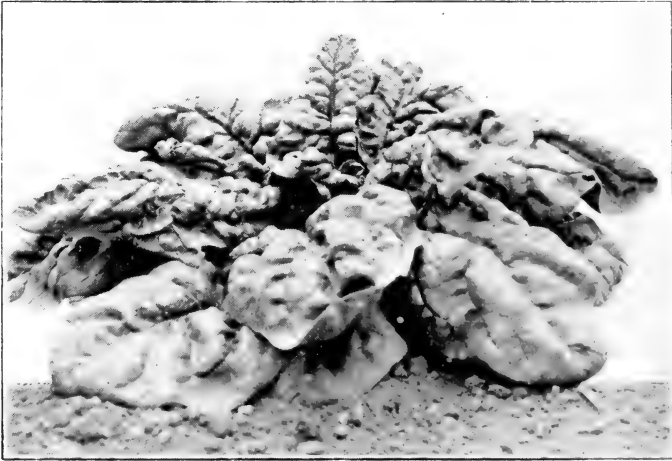
A hardy annual used like mustard for salads.....	<b>Morrison</b> .....	1.00	1.00
--	-----------------------	------	------

## SALSIFY or Vegetable Oyster

Mammoth Sandwich Island.....	<b>Morton</b> .....	1.75	1.50
------------------------------	---------------------	------	------

## SORREL

Large Leaved French.....	<b>Moultrie</b> .....	1.00	1.00
--------------------------	-----------------------	------	------



King of Denmark

## SPINACH

	Tel. cipher	Per lb.	10 lbs. or more per lb.	500 lbs. or more per lb.
<b>Savoy Leaved</b> or Bloomsdale.....	<b>Murray</b> .....	\$ .18	\$ .14	\$ .13
Long Standing Savoy Leaved (New).....	<b>Muse</b> .....	.22	.18	.16
Broad Flanders.....	<b>Nance</b> .....	.18	.14	.13
Improved Thick Leaved ( <i>Monstrous</i> <i>Viroflay</i> ).....	<b>Natrona</b> .....	.18	.14	.13
<b>Victoria</b> .....	<b>Navarro</b> .....	.18	.14	.13
<b>King of Denmark</b> or Antvorskov. Un- doubtedly the most valuable introduc- tion of spinach in recent years. ( <i>See cut</i> )	<b>Neosho</b> .....	.22	.18	.16
<b>Long Season</b> .....	<b>Nelson</b> .....	.18	.14	.13
New Zealand. ( <i>Tetragonia</i> ).....	<b>Newberry</b> .....	.50	.45	.45

## SQUASH

## SUMMER SORTS

	Tel. cipher	Per lb.	25 lbs. or more per lb.
Long Island White Bush.....	Noble.....	\$ .60	\$ .55
Early White Bush Scallop.....	Nicholas.....	.60	.55
<b>Mammoth White Bush Scallop.</b> ( <i>See cut</i> ).....	Newton.....	.75	.65
Early Yellow Bush Scallop.....	Nolan.....	.60	.55
<b>Mammoth Summer Crookneck.</b> ( <i>See cut</i> ).....	Nowata.....	.75	.65
Summer Crookneck.....	Nuckolls.....	.60	.55
Italian Vegetable Marrow ( <i>Cocozella di Napoli</i> ).....	Nye.....	1.00	.90

## AUTUMN AND WINTER SORTS

<b>Delicious</b> .....	Oceana.....	.60	.55
Boston Marrow.....	Ogle.....	.50	.45
<b>Golden Hubbard</b> .....	Okfuskee.....	.60	.55
<b>Hubbard</b> .....	Okmulgee.....	.60	.55



Mammoth White Bush Scallop and Mammoth Summer Crookneck

## TOBACCO

	Tel. cipher	Per oz.	Per lb.
<b>White Burley</b> .....	Osborne.....	\$ .25	\$ 2.50
Connecticut Seed Leaf.....	Overton.....	.25	2.50
<b>Havana</b> .....	Owsley.....	.25	2.50



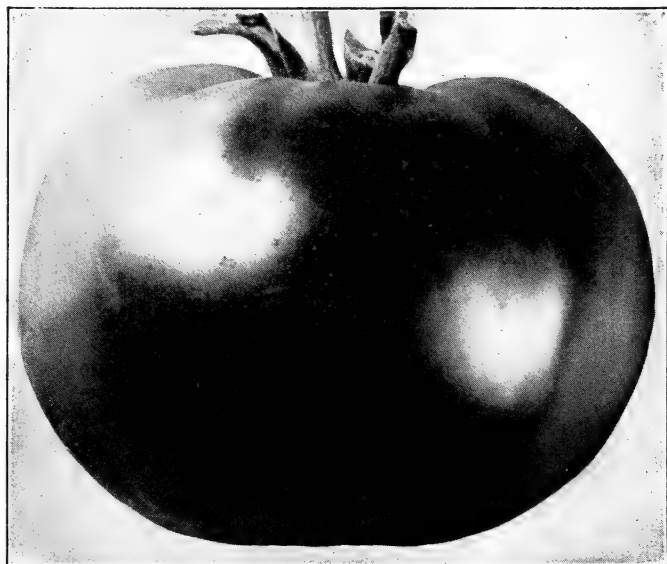
Avon Early

## TOMATO

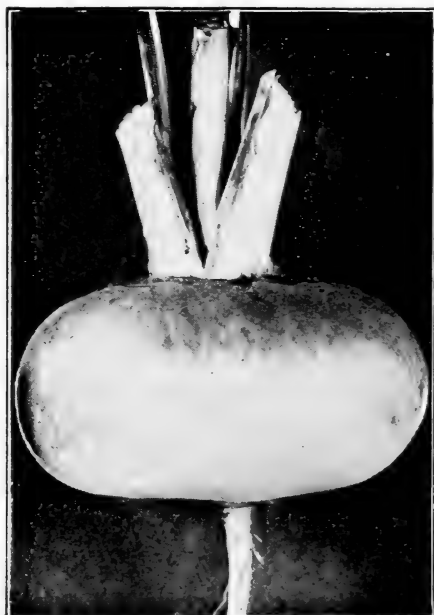
	Tel. cipher	Per lb.	25 lbs. or more per lb.
<b>Earliana</b> .....	<b>Oxford</b> .....	\$ 2.50	\$ 2.25
<b>Avon Early.</b> The best extra early, scarlet fruited variety. (See cut) .....	<b>Owyhee</b> .....	3.50	3.25
<b>John Baer.</b> Extra early, scarlet fruited, hardy and productive. Shippers should try it.....	<b>Ozark</b> .....	2.50	2.25
<b>Bonny Best</b> .....	<b>Panola</b> .....	2.50	2.25
<b>Chalk's Early Jewel</b> .....	<b>Page</b> .....	2.50	Sold out 2.25
<b>Cooper's Special.</b> A new semi-dwarf, purple fruited variety. Fruits globe shaped and very early maturing. Recommended as a good shipping sort.....	<b>Palo</b> .....	SOLD OUT	2.75
<b>Gulf State Market.</b> The earliest good purple tomato. Unequaled as a shipping sort.....	<b>Paisley</b> .....	5.00	4.75
<b>Early Detroit</b> .....	<b>Pacific</b> .....	5.00	4.75
<b>Marglobe</b> .....	<b>Padus</b> .....	10.00	8.00
<b>Aeme.</b> Known also as Essex Early Hybrid .....	<b>Pamlico</b> .....	2.25	2.15
<b>Early Michigan</b> .....	<b>Parker</b> .....	2.50	2.25
<b>Livingston's Globe</b> .....	<b>Patrick</b> .....	6.00	5.75
<b>Beauty</b> .....	<b>Pawnee</b> .....	2.50	2.25

## TOMATO—Continued

	Tel. cipher	Per lb.	25 lbs. or more per lb.
<b>Greater Baltimore</b> .....	<b>Pepin</b> .....	\$2.50	\$2.25
<b>Stone.</b> Our stock is distinctly superior to most of that offered under this name; being more uniform, better colored and larger. ( <i>See cut</i> ) .....			
	<b>Phelps</b> .....	2.50	2.25
Ponderosa .....	<b>Piatt</b> .....	5.00	4.75
Dwarf Stone .....	<b>Pike</b> .....	3.00	2.75
<b>Dwarf Champion</b> .....	<b>Pinal</b> .....	3.25	3.00
<b>Golden Queen</b> .....	<b>Platte</b> .....	2.50	2.25
Peach .....	<b>Piute</b> .....	3.00	3.00
White Apple .....	<b>Plymouth</b> .....	3.00	3.00
Red Pear .....	<b>Polk</b> .....	3.00	3.00
Yellow Pear .....	<b>Pontotoc</b> .....	3.00	3.00
Yellow Plum .....	<b>Portage</b> .....	3.00	3.00
Red Cherry .....	<b>Posey</b> .....	3.00	3.00
Yellow Cherry .....	<b>Powell</b> .....	3.00	3.00
Yellow Husk or Ground Cherry .....	<b>Prairie</b> .....	3.00	3.00



Stone



Early Purple Top, Strap Leaved

## TURNIP

### WHITE FLESHED SORTS

	Tel. cipher	Per lb.	250 lbs. or more per lb.
<b>Extra Early White Milan</b> .....	<b>Preble</b> .....	\$ .50	\$ .45
<b>Extra Early Purple Top Milan.</b> Roots purple-red on upper portion, white below, smooth, flat; flesh mild, sweet and tender. Well adapted for forcing.	<b>Presidio</b> ..	.50	.45
<b>White Egg.</b> An early, oval or egg-shaped variety with smooth, clear white roots of medium size; flesh fine grained and sweet.	<b>Prowers</b> ...	.30	.28
<b>Early White Flat Dutch, Strap Leaved.</b> A most excellent early garden variety. Roots medium sized, flat; color white. Very early; sweet and tender. It is desirable for table use.	<b>Pueblo</b> ...	.25	.22
<b>Early Purple Top, Strap Leaved.</b> Very extensively used for the table. Roots flat, of medium size, purple or dark red above ground, white below. Flesh white, fine grained and tender. (See <i>cut</i> ) .....	<b>Putnam</b> ..	.25	.22
<b>Purple Top White Globe.</b> The roots are of excellent quality and are suitable for the table as well as for stock feeding.	<b>Queens</b> ...	.30	.25



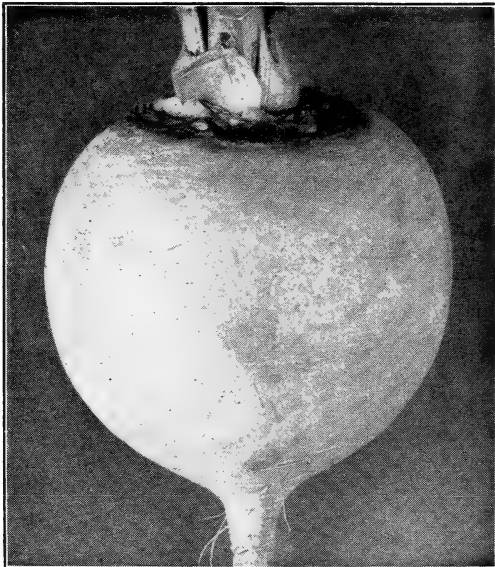
## TURNIP—Continued

## WHITE FLESHED SORTS

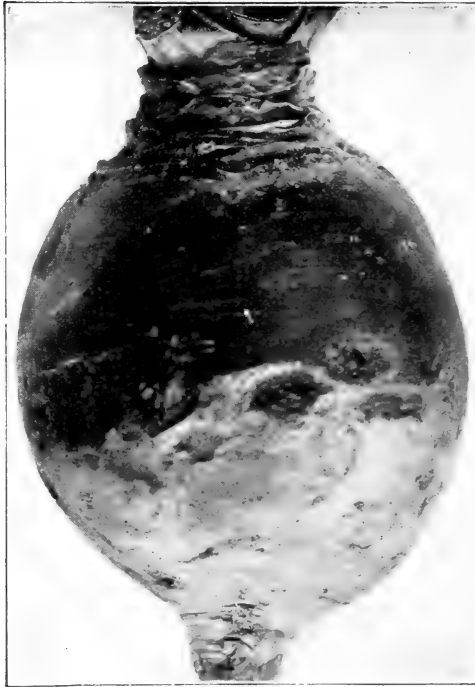
	Tel. cipher	Per lb.	250 lbs. or more per lb.
Cow Horn or Long White. Roots long, often twelve to fifteen inches; flesh fine grained and well flavored.			
	<b>Rabun</b> .....	\$ .35	\$ .30
Large White Norfolk.....	<b>Rains</b> .....	.25	.22
Pomeranean White Globe.....	<b>Ralls</b> .....	.25	.22
Seven Top, <i>for turnip greens</i> .....	<b>Ransom</b> .....	.25	.22
<b>Southern Prize</b> .....	<b>Ravall</b> .....	.30	.28

## YELLOW FLESHED SORTS

Large Amber Globe. Roots large, globular; skin clear yellow except the top which is tinged with green. Flesh light yellow, fine grained and sweet.	<b>Ray</b> .....	.35	.32
Yellow Globe.....	<b>Redwood</b> .....	.35	.32
<b>Yellow Stone</b> . Roots of medium size, globular; skin smooth, attractive pale yellow. Flesh crisp, very tender and of fine quality ( <i>See cut</i> ).....	<b>Refugio</b> ...	.35	.32
<b>Orange Jelly</b> or Golden Ball.....	<b>Renville</b> ...	.30	.28
Purple Top Yellow Aberdeen.....	<b>Rhea</b> .....	.30	.28



Yellow Stone



Bangholm

## RUTA BAGA OR SWEDE

	Tel. cipher	Per lb.	250 lbs. or more per lb.
American Purple top or Improved Long Island	Richmond	\$ .30	\$ .25
Bangholm Swede	Rolette	.25	.22
Carter's Imperial Purple Top	Ritchie	.25	.22
Ferry's Improved Purple Top Yellow	Roanoke	.30	.25
Drummond's	Rockdale	.30	.25
Golden Neckless	Rooks	.40	.35
Monarch or Tankard	Rich	.35	.30
Sutton's Champion	Runnell	.25	.22
Sweet Perfection White. Absolutely neckless	Sabine	.40	.38
Universal or Canadian Gem	Riley	.35	.32
White or Sweet Russian	Russell	.25	.22
Yellow Swede	Ringgold	.25	.22

## AROMATIC, MEDICINAL AND POT HERBS

	Tel. cipher	Per lb.
Anise .....	<b>Saginaw</b> .....	\$ .80
Balm .....	<b>Salem</b> .....	2.50
Basil, Sweet .....	<b>Saluda</b> .....	1.25
Borage .....	<b>Sanborn</b> .....	.75
Caraway .....	<b>Sandoval</b> .....	.40
Caraway, <i>for flavoring</i> .....	<b>Sangamon</b> .....	.35
Coriander .....	<b>Saratoga</b> .....	.40
Coriander, <i>for flavoring</i> .....	<b>Sarpy</b> .....	.35
Dill, Mammoth .....	<b>Schley</b> .....	.60
Fennel, Sweet .....	<b>Scotland</b> .....	.50
Horehound .....	<b>Screven</b> .....	1.25
Hyssop .....	<b>Searcy</b> .....	2.50
Lavender .....	<b>Seminole</b> .....	1.75
Marjoram, Sweet .....	<b>Sequoyah</b> .....	2.00
Rosemary .....	<b>Seward</b> .....	3.00
Rue .....	<b>Sharkey</b> .....	2.50
Saffron .....	<b>Shasta</b> .....	1.50
Sage, Broad Leaf .....	<b>Shawnee</b> .....	1.25
Savory, Summer .....	<b>Sheridan</b> .....	1.00
Thyme .....	<b>Shoshone</b> .....	2.00
Wormwood .....	<b>Sierra</b> .....	2.00

## GRASS SEED

Prices are subject to fluctuations of the market. Not less than 1/2 lb. at pound rates nor less than 10 lbs. at 100 lb. rate. Terms net cash ten days.

	Tel. cipher	Per lb.	Per 100 lbs.
Blue Grass, Canadian, fancy cleaned; choicest grade .....	<b>Stone</b> .....	Market	price
Blue Grass, Kentucky, fancy cleaned; choicest grade .....	<b>Stewart</b> .....	"	"
Rye Grass, Perennial ( <i>Pacey's short seeded</i> ) .....	<b>Stearns</b> .....	"	"
Red Top, Fancy (cleaned from chaff) .....	<b>Snyder</b> .....	"	"
Fescue, Red or Creeping ( <i>European</i> ) .....	<b>Stafford</b> .....	"	"
Rough Stalked Meadow Grass .....	<b>Staffman</b> .....	"	"
South German Pent Grass .....	<b>Stephens</b> .....	"	"
Wood Meadow Grass .....	<b>Story</b> .....	"	"
Lawn Grass, Extra Fine Mixed .....	<b>Stoddard</b> .....	\$ .50	\$45.00
Lawn Grass, Fine Mixed .....	<b>Stokes</b> .....	.35	30.00
Lawn Grass for Shady Locations .....	<b>Stonewall</b> .....	Prices on application	



Dwarf Essex Rape

### CLOVER

	Tel. cipher	Per 100 lbs.
White Dutch, <i>choice</i> .....	Sutter.....	Market price

### MISCELLANEOUS FARM SEEDS

Rape, Dwarf Essex, <i>for sowing (See cut)</i> .....	Terry.....	Market price
Sunflower, Large Russian.....	Tioga.....	" "

### BIRD SEEDS

The seeds quoted below are for feeding purposes only, not for planting.

Canary, <i>re-cleaned</i> .....	Tompkins.....	Market price
Hemp.....	Toombs.....	" "
Lettuce.....	Towner.....	" "
Maw.....	Traill.....	" "
Rape.....	Trigg.....	" "
Mixed Bird Seed.....	Trinity.....	" "

All prices on this page are subject to fluctuations of the market. Not less than 10 Lbs. at 100 lb. rate. Terms net cash ten days.

# A SELECTED LIST OF FLOWER SEEDS IN BULK

We will not sell less than 1 oz. of sorts priced at 20c per oz. or under but we will put up ½ oz. of seeds priced at 25c per oz. and over; ¼ oz. of seeds priced at 75c per oz. and over; ⅛ oz. of seeds priced at \$2.00 per oz. and over.

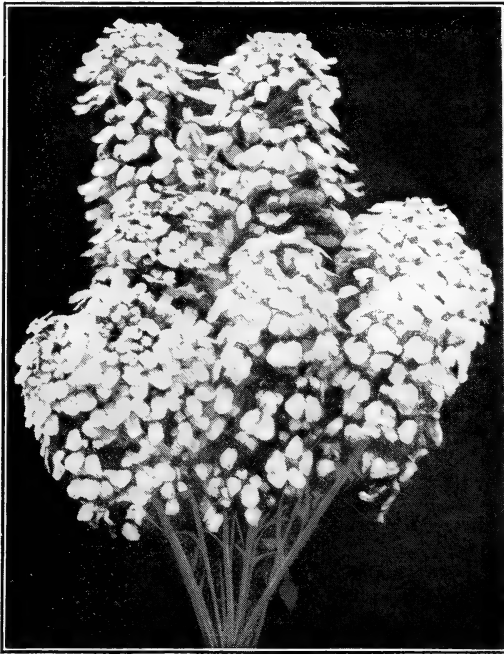
Not less than ½ pound at the pound rate. Less than ¼ pound will be charged at the ounce rate.



**Ageratum**

	Per oz.	Per ¼ lb.	Per lb.
Acroclinium, Album.....	\$ .20	\$ .60	\$ 2.00
“ Roseum.....	.20	.60	2.00
“ Mixed.....	.15	.40	1.50
Ageratum Mexicanum.....	.20	.60	2.00
“ Dwarf White.....	.30	.90	3.00
“ “ Blue.....	.30	.90	3.00
“ “ Mixed.....	.25	.75	2.50

	Per oz.	Per ¼ lb.	Per lb.
Alyssum, Sweet (Maritimum).....	\$ .15	\$ .40	\$ 1.50
“ Little Gem (Maritimum Compactum).....	.20	.60	2.00
“ Carpet of Snow (Maritimum Procumbens)....	.35	1.00	3.50
“ Lilac Queen.....	.30	.90	3.00
Amaranthus tricolor (Joseph's Coat).....	.25	.75	2.50
“ Caudatus.....	.10	.25	.75
Melancholicus Ruber.....	.15	.40	1.50
Arabis, Alpina.....	.35		
Arctotis Grandis.....	.40		
Asparagus, Sprengeri.....	\$ .80 per 1000 seeds		
Aster, Queen of the Market, Crimson.....	.60	1.75	6.00
“ “ “ “ “ Lavender.....	.60	1.75	6.00
“ “ “ “ “ Pink.....	.60	1.75	6.00
“ “ “ “ “ Purple.....	.60	1.75	6.00
“ “ “ “ “ Rose.....	.60	1.75	6.00
“ “ “ “ “ White.....	.60	1.75	6.00
“ “ “ “ “ Mixed.....	.50	1.40	5.00
“ Late Upright, Crimson.....	.70	2.00	7.00
“ “ “ “ “ Flesh Pink.....	.70	2.00	7.00
“ “ “ “ “ Lavender.....	.70	2.00	7.00
“ “ “ “ “ Purple.....	.70	2.00	7.00
“ “ “ “ “ Rose.....	.70	2.00	7.00
“ “ “ “ “ White.....	.70	2.00	7.00
“ “ “ “ “ Mixed.....	.70	2.00	7.00
“ King, Crimson.....	.80	2.25	8.00
“ “ “ “ “ Lavender.....	.80	2.25	8.00
“ “ “ “ “ Pink.....	.80	2.25	8.00
“ “ “ “ “ Rose.....	.80	2.25	8.00
“ “ “ “ “ Violet.....	.80	2.25	8.00
“ “ “ “ “ White.....	.80	2.25	8.00
“ “ “ “ “ Mixed.....	.80	2.25	8.00
“ Giant Crego or Comet, Crego Pink.....	.80	2.25	8.00
“ “ “ “ “ Crimson.....	.80	2.25	8.00
“ “ “ “ “ Lavender.....	.80	2.25	8.00
“ “ “ “ “ Purple.....	.80	2.25	8.00
“ “ “ “ “ Rose.....	.80	2.25	8.00
“ “ “ “ “ White.....	.80	2.25	8.00
“ “ “ “ “ Mixed.....	.75	2.25	7.50
“ Ferry's Late Branching, Crimson.....	.70	2.00	7.00
“ “ “ “ “ Heart of France.....	.70	2.00	7.00
“ “ “ “ “ Lavender.....	.70	2.00	7.00
“ “ “ “ “ Lavender Pink.....	.70	2.00	7.00
“ “ “ “ “ Peerless Pink.....	.70	2.00	7.00
“ “ “ “ “ Purple.....	.70	2.00	7.00
“ “ “ “ “ Silvery Pink.....	.70	2.00	7.00
“ “ “ “ “ Tyrian Rose.....	.70	2.00	7.00
“ “ “ “ “ White.....	.70	2.00	7.00
“ “ “ “ “ Mixed.....	.60	1.75	6.00
“ Finest Mixed.....	.50	1.40	5.00
Australian Pea Vine.....	.30	.90	3.00
Balloon Vine (Cardiospermum halicacabum).....	.10	.30	1.00
Balsam, Double or Camellia Flowered, Pure White.....	.30	.90	3.00
“ “ “ “ “ Dark Red.....	.30	.90	3.00
“ “ “ “ “ Solferino.....	.25	.75	2.50
“ “ “ “ “ Dwarf Mixed.....	.25	.75	2.50
“ “ “ “ “ Tall Mixed.....	.20	.60	2.00



Candytuft

	Per oz.	Per ¼ lb.	Per lb.
Calendula, Double Lemon Queen.....	\$ .15	\$ .40	\$ 1.50
“ “ Meteor.....	.15	.40	1.25
“ “ Orange King.....	.15	.40	1.50
“ “ Trianon.....	.15	.40	1.25
“ “ Mixed.....	.10	.30	1.00
Canary Bird Flower.....	.20	.60	2.00
Candytuft, Fragrant White.....	.15	.40	1.50
“ Lilac.....	.20	.60	2.00
“ Purple.....	.20	.60	2.00
“ Rocket (Giant Empress).....	.10	.30	1.00
“ Rose Carmine.....	.20	.60	2.00
“ White.....	.20	.60	2.00
“ Giant Hyacinth Flowered White.....	.40	1.10	4.00
“ Fine mixed.....	.10	.30	1.00
Canna, finest large-flowering, mixed.....	.15	.40	1.50
Canterbury Bell, Single Mixed.....	.20	.60	2.00
“ “ Double Blue.....	1.00	2.75	10.00
“ “ “ Rose.....	1.00	2.75	10.00
“ “ “ White.....	1.00	2.75	10.00
“ “ “ Mixed.....	.75	2.00	7.50
“ “ Calycanthera Mixed.....	1.25		
Cardinal Climber.....	.50	1.40	5.00



Celosia Childsi

	Per oz.	Per ¼ lb.	Per lb.
Carnation, Grenadin, Double Red.....	\$ 1.50		
“ “ “ White.....	1.50		
“ Double dwarf Vienna, mixed, early flowering	1.00	\$ 2.75	\$10.00
“ Marguerite, finest mixed.....	.60	1.75	6.00
“ Double Perpetual Flowered.....	1.50		
“ Double Picotee Fine Mixed.....	1.25	3.25	12.00
“ Double Choice Mixed.....	1.00	2.75	10.00
Castor Bean, Sanguineus.....	.10	.25	.75
“ “ Zanzibariensis.....	.10	.25	.75
“ “ Mixed.....	.10	.25	.75
Celosia Childsi, Crimson.....	1.00	2.75	10.00
“ “ Yellow.....	2.00		
“ Golden Plume.....	.50	1.40	5.00
“ Triumph of the Exposition.....	.50	1.40	5.00
“ Pyramidalis Plumosa Mixed.....	.30	.90	3.00
“ Glasgow Prize.....	2.50		
“ Cristata (Cockcomb) Dwarf Rose.....	2.50		
“ “ “ “ Yellow.....	2.50		
“ “ “ “ Giant Empress... ..	2.50		
“ “ “ “ Mixed.....	1.50	4.00	15.00
Centaurea, Imperialis, Amaranth Red.....	.60		
“ “ Lavender.....	.45	1.25	4.50
“ “ Purple.....	.45	1.25	4.50
“ “ White.....	.45	1.25	4.50
“ “ Mixed.....	.35	1.00	3.50
“ Suaveolens, Yellow.....	.45	1.25	4.50



	Per oz.	Per ¼ lb.	Per lb.
Centaurea Cyanus (Bachelor's Button) mixed.....	\$ .10	\$ .30	\$ 1.00
“ “ Double Blue.....	.25	.75	2.50
“ “ “ Rose.....	.25	.75	2.50
“ “ “ White.....	.30	.90	3.00
“ “ “ Mixed (Bachelor's Button).....	.20	.60	2.00
“ Gymnocarpa.....	.35	1.00	3.50
Cheiranthus Allioni.....	.40		
Chrysanthemum, Evening Star.....	.20	.60	2.00
“ “ White Gloria.....	.20	.60	2.00
“ “ Carinatum Eclipse.....	.20	.60	2.00
“ “ “ Mixed.....	.20	.60	2.00
“ “ Coronarium Double White.....	.20	.60	1.75
“ “ “ “ Yellow.....	.20	.60	1.75
“ “ “ “ Mixed.....	.15	.40	1.50
“ “ Mixed.....	.15	.40	1.50
Cobaea Scandens, violet-blue.....	.30	.90	3.00
Columbine (Aquilegia) Californica hybrida.....	2.00		
“ “ “ Coerulea Hybrida.....	1.50		
“ “ “ Single Mixed.....	.50	1.40	5.00
“ “ “ Double Mixed.....	.50	1.40	5.00
Coreopsis or Calliopsis, Tinctoria, fine mixed.....	.10	.30	1.00
“ “ “ Golden Ray.....	.40		
“ “ “ Hybrida Double Mixed.....	.20	.60	2.00
“ “ “ Lanceolata Grandiflora.....	.20	.60	2.00
Cosmos, Early Flowering, Crimson.....	.25	.75	2.50
“ “ “ Pink.....	.25	.75	2.50
“ “ “ White.....	.25	.75	2.50
“ “ “ Mixed.....	.15	.40	1.50
“ Hybrida, Giant Pink.....	.20	.60	2.00
“ “ “ White.....	.20	.60	2.00
“ “ “ Mixed.....	.10	.30	1.00
Cypress Vine (Ipomoea quamoclit) Scarlet.....	.15	.55	1.75
“ “ “ “ White.....	.15	.55	1.75
“ “ “ “ Mixed.....	.15	.40	1.50
Dahlia, finest double mixed.....	1.75	4.75	18.00
“ “ single mixed.....	.40	1.10	4.00
Daisy, Double Rose (Longfellow).....	1.75		
“ “ White.....	1.75		
“ “ Mixed.....	1.50		
Datura Wrighti.....	.20	.60	2.00
“ Chlorantha fl. pl., double yellow.....	.20	.60	2.00
“ Mixed.....	.20	.60	2.00
Didiscus Coeruleus.....	.60	1.75	6.00
Dimorphoteca Aurantiaca.....	.60	1.75	6.00
Dwarf Morning Glory (Convolvulus minor), Mixed.....	.10	.20	.50
Eschscholtzia, Aurantiaca (True California Poppy).....	.15	.40	1.25
“ “ Carmine King.....	.40	1.10	4.00
“ “ Mandarin.....	.25	.75	2.50
“ “ Mikado.....	.40	1.10	4.00
“ “ Scarlet Beauty.....	1.50	4.50	15.00
“ “ Mixed, finest colors.....	.15	.40	1.25
“ “ Bush (Hunnemannia).....	.50	1.40	5.00
Euphorbia Marginata.....	.25	.75	2.50
Forget-Me-Not, Blue (Myosotis Alpestris).....	.30	.90	3.00
“ “ “ Dissitiflora.....	2.25		

	Per oz.	Per $\frac{1}{4}$ lb.	Per lb.
Four O'Clock (Mirabilis, Marvel of Peru) Red	\$ .10	\$ .30	\$ 1.00
" " White	.10	.30	1.00
" " White, Red Striped	.10	.30	1.00
" " Mixed	.10	.25	.80
Foxglove (Digitalis) fine mixed	.35	1.00	3.50
" " Ivory's Spotted	.40	1.10	4.00
" " Campanulata Monstrosa, mixed	.60	1.75	6.00
Gaillardia, Picta	.20	.60	2.00
" Grandiflora	.50		
" Picta Lorenziana	.25	.75	2.50



Gaillardia, Picta Lorenziana

Globe Amaranth, Purple	15	40	1.50
" " White	15	40	1.50
" " Striped	15	40	1.50
" " Mixed	10	30	1.00
Godetia, fine mixed	20	60	2.00

	Per oz.	Per ¼ lb.	Per lb.
Gourds, Apple shaped, early	\$ .15	\$ .40	\$ 1.25
“ Bottle	.15	.40	1.25
“ Calabash	.15	.40	1.25
“ Corsican	.15	.40	1.25
“ Dish Cloth	.15	.40	1.25
“ Hercules' Club	.15	.40	1.25
“ Japanese Nest Egg	.15	.40	1.25
“ Orange (Mock orange)	.15	.40	1.25
“ Pear shaped, Striped	.15	.40	1.25
“ Powder Horn	.15	.40	1.25
“ Siphon or Dipper	.15	.40	1.25
“ Mixed	.10	.30	1.00
Gypsophila, Elegans Large Flowering Pure White	.10	.25	.80
“ “ Mixed	.10	.25	.70
“ Paniculata Double White	3.00		
Helichrysum monstrosum, largest double mixed	.30	.90	3.00
Heliotrope, Dark Varieties mixed, very choice	1.00	2.75	10.00
Hibiscus Africanus	.20	.60	2.00
Hollyhock, Early Flowering Mixed	.75	2.00	7.50
“ Double Blood Red	1.00		
“ “ Deep Rose	1.00		
“ “ Lemon Yellow	1.00		
“ “ Pink	1.00		
“ “ Pure White	1.00		
“ “ Salmon	1.00		
“ “ Choice Mixed	1.00		
“ “ Mixed	.80	2.25	8.00
Humulus Japonicus ( <i>Japanese Hop</i> )	.25	.75	2.50
Hyacinth Bean ( <i>Dolichos lablab</i> ) Alba, White	.10	.30	1.00
“ “ “ “ Purpurea, purple	.10	.30	1.00
“ “ “ “ Mixed	.10	.25	.75
Ice Plant, ( <i>Mesembryanthemum crystallinum</i> )	.20	.60	2.00
Ipomoea, Bona Nox ( <i>Evening Glory</i> )	.10	.30	1.00
“ Coccinea ( <i>Star Ipomoea</i> )	.10	.30	.90
“ Early Flowering Sky Blue	.50		
“ Limbata, mixed	.10	.30	1.00
“ Setosa ( <i>Brazilian Morning Glory</i> )	.25	.75	2.50
“ Fine Mixed	.15	.40	1.50
Job's Tears ( <i>Coix lachryma</i> )	.10	.15	.40
Kochia Childsi	.10	.25	.75
Kudzu Vine	.25	.75	2.50
Lantana French Hybrids	.20		
Larkspur, Double tall stock flowered, Dark Blue	.50		
“ “ “ “ “ Lustrous Carmine	.50		
“ “ “ “ “ Shell Pink	.50		
“ “ “ “ “ Sky Blue	.50		
“ “ “ “ “ White	.50		
“ “ “ “ “ Mixed	.25	.75	2.50
“ ( <i>Delphinium</i> ) Belladonna	2.50		
“ “ Bellamosum	2.50		
“ “ Hybrid Large Flowering Mixed	1.75	4.50	18.00
Linum grandiflorum, rubrum ( <i>Scarlet Flax</i> )	.15	.40	1.50
Lobelia Erinus, Crystal Palace	1.00	2.75	10.00
“ “ True Blue	1.50	4.25	15.00
“ “ Queen of the Whites	1.00		
“ “ Gracilis	.50	1.40	5.00

	Per oz.	Per ¼ lb.	Per lb.
Love-in-a-mist ( <i>Nigella Damascena</i> ) Double Blue	\$ .10	\$ .30	\$ 1.00
Lupin Cruikshanki	.15	.40	1.25
Marigold African, double tall, Lemon Queen	.60	1.75	6.00
“ “ “ “ Orange Prince	.60	1.75	6.00
“ “ “ “ Mixed	.35	1.00	3.50
“ French, <i>Tagetes Signata</i> Pumila	.40	1.10	4.00
“ “ Double Dwarf Golden Ball	.30	.90	3.00
“ “ “ “ Gold Striped	.35	1.00	3.50
“ “ “ “ Pale Yellow	.30	.90	3.00
“ “ “ “ Mixed	.30	.90	3.00
“ Single Legion of Honor	.25	.75	2.50
<i>Matricaria</i> , <i>Ex ma Grandiflora</i> Fl. Pl.	1.00		
Maurandia mixed	1.00	2.75	10.00
Mignonette, Sweet ( <i>Reseda odorata grandiflora</i> )	.10	.30	1.00
“ Machet	.20	.60	2.00
“ “ White	.80		
“ Goliath Red	.75	2.25	7.50
<i>Mimulus Punctatus</i> ( <i>Monkey Flower</i> )	2.50		
<i>Momordica Charantia</i> (Balsam Pear)	.25	.75	2.50
“ <i>Balsamina</i> (Balsam Apple)	.25	.75	2.50
Moon Flower ( <i>Ipomoea Grandiflora</i> Alba)	.25	.75	2.50
Morning Glory, Aurora	.10	.30	1.00
“ “ ( <i>Convolvulus major</i> ) Crimson	.10	.25	.80
“ “ “ “ Blue	.10	.25	.80
“ “ “ “ Purple	.10	.25	.80
“ “ “ “ Striped	.10	.25	.80
“ “ “ “ White	.10	.25	.80
“ “ “ “ Mixed		.15	.50
“ “ Giant Japanese, Extra Select mixed	.10	.30	1.00
Mourning Bride ( <i>Scabiosa</i> ) double, Blue	.35	1.00	3.50
“ “ “ “ Maroon	.35	1.00	3.50
“ “ “ “ Pink	.35	1.00	3.50
“ “ “ “ Red	.35	1.00	3.50
“ “ “ “ Yellow	.35	1.00	3.50
“ “ “ “ White	.35	1.00	3.50
“ “ “ “ Mixed	.30	1.00	3.50

## NASTURTIUMS

### Dwarf Varieties

(*Tropaeolum minor*)

	Per oz.	Per ¼ lb.	Per lb.
Aurora	\$ .10	\$ .25	\$ .80
Bronze Colored	.10	.25	.80
Chameleon	.10	.25	.80
Crimson	.10	.25	.80
Empress of India	.10	.30	.90
King Theodore	.10	.30	.90
Pearl	.10	.25	.80
Rose	.10	.30	.90
Scarlet	.10	.25	.80
Schilling's Striped	.10	.30	1.00

## NASTURTIUMS-Continued

### Dwarf Varieties

(*Tropaeolum minor*)

	Per oz.	Per ¼ lb.	Per lb.
Yellow.....	\$ .10	\$ .25	\$ .80
Mixed. (Tel. Cipher Itawa).....	.10	.20	.60
Madame Gunter's Hybrids.....	.10	.25	.80

### Trailing Varieties

(*Tropaeolum Lobbianum*)

Bright Yellow.....	.10	.25	.80
Brilliant.....	.10	.25	.80
Chameleon.....	.10	.25	.80
Chestnut Brown.....	.10	.25	.80
Giant of Battles.....	.10	.25	.80
Hemisphaericum.....	.10	.25	.80
Jupiter.....	.10	.25	.80
King of the Blacks.....	.10	.25	.80
Light Yellow, with maroon stain.....	.10	.25	.80
Queen Wilhelmina.....	.10	.25	.80
Rose.....	.10	.25	.80
Spitfire.....	.10	.25	.80
Mixed. (Tel. Cipher Izard).....	.10	.20	.60

Nemesia, Suttoni Grandiflora Mixed.....	1.50		
Nicotiana Affinis.....	.20	.60	2.00
“ Sanderae Mixed.....	.40		

## PANSIES

Pansy, Ferry's Superbissima Blotched.....	3.00		
“ Giant Flowering Parisian, mixed.....	1.75	5.00	17.50
“ “ Trimardeau, Mixed.....	1.25	3.50	12.50
“ “ Flowering, Extra Choice Mixed.....	1.75	5.00	17.50
“ Large Flowering, Choice Mixed.....	1.00	2.75	10.00
“ Giant Black.....	1.25	3.50	12.50
“ “ Bronze.....	1.25	3.50	12.50
“ “ Light Blue.....	1.25	3.50	12.50
“ “ Mahogany.....	1.25	3.50	12.50
“ “ White.....	1.25	3.50	12.50
“ “ Wine Colored.....	1.25	3.50	12.50
“ “ Yellow.....	1.25	3.50	12.50
“ Lord Beaconsfield.....	1.25	3.50	12.50
“ Navy Blue.....	1.25	3.50	12.50
Peas, Everlasting.....	.50	1.40	5.00
Petunia, Hybrida Dwarf, Rosy Morn.....	2.00		
“ “ “ White.....	1.50		
“ “ “ Mixed.....	1.25	3.75	14.00
“ “ General Dodds.....	1.00		
“ “ Lord Courtenay.....	1.50		
“ “ White.....	1.00		
“ “ Finest Striped and Blotched.....	.75	2.25	7.50
“ “ Choice Mixed.....	.50	1.40	5.00
“ “ Large Flowering Mixed.....	7.50		

	Per oz.	Per ¼ lb.	Per lb.
Phlox Drummondii, large flowering, Alba, pure white...	\$ .70	\$2.00	\$ 7.00
“ “ “ “ Black Warrior, deep maroon.....	.70	2.00	7.00
“ “ “ “ Isabellina, creamy yellow.....	.70	2.00	7.00
“ “ “ “ Kermesina alba oculata.....	.70	2.00	7.00
“ “ “ “ Lilac.....	.70	2.00	7.00
“ “ “ “ Rosea, rose with distinct eye.....	.70	2.00	7.00
“ “ “ “ Rosy Chamois.....	.70	2.00	7.00
“ “ “ “ Scarlet.....	.70	2.00	7.00
“ “ “ “ Splendens, crimson, pure white eye..	.70	2.00	7.00
“ “ “ “ Violet.....	.70	2.00	7.00
“ “ “ “ Extra choice mixed.	.60	1.75	6.00
Pink, Single Crimson.....	.50		
“ “ White.....	.40		
“ “ White Marbled Rose.....	.50		
“ Royal Pinks.....	.50		
“ China, double mixed (Dianthus Chinensis).....	.25	.75	2.50
“ Heddewig's Double Diadem Mixed.....	.50	1.40	5.00
“ “ Finest Single Mixed.....	.25	.75	2.50
“ Double Japan Mixed (Dianthus laciniatus fl. pl.)	.50	1.40	5.00
Poppy, Shirley, extra fine mixed.....	.15	.40	1.40
“ Tulip Flowered (Papaver glaucum).....	.40	1.10	4.00
“ Ryburgh Hybrid.....	.50	1.40	5.00
“ Double Fringed Carnation, White.....	.20	.60	2.00
“ “ “ Red.....	.20	.60	2.00
“ “ “ Mixed.....	.10	.30	1.00
“ “ Paeony, White.....	.15	.40	1.50
“ “ “ Red.....	.15	.40	1.50
“ “ “ Mixed.....	.10	.30	1.00
“ “ Choice Mixed.....	.10	.25	.75
“ Single Mixed.....	.10	.30	1.00
“ Orientale.....	1.00	2.75	10.00
“ “ Hybrids Mixed.....	1.00	2.75	10.00
Portulaca Single, Orange.....	.60		
“ “ Scarlet.....	.60		
“ “ White.....	.60		
“ “ Fine Mixed.....	.40	1.10	4.00
“ Double Mixed.....	1.25	3.50	12.50
Primrose, Evening, Lamarckiana.....	.25		
Pyrethrum, Parthenifolium Aureum.....	.30		
Rhodanthe, Rose.....	.40	1.10	4.00
“ White.....	.40	1.10	4.00
“ Mixed.....	.35	1.00	3.50
Rocket, Purple.....	.30		
“ White.....	.30		
Rose, Multiflora.....	2.00		
Salpiglossis, fine mixed, hybrid varieties.....	.60	1.75	6.00
Salvia Splendens (Flowering Sage).....	2.50	6.75	25.00
“ Bonfire.....	2.50	6.75	25.00
Scarlet Runner Beans.....			.20
Schizanthus Retusus Mixed.....	1.00		
Sensitive Plant ( <i>Mimosa Pudica</i> ).....	.30	.90	3.00

	Per oz.	Per ¼ lb.	Per lb.
Shasta Daisy	\$. 50	\$1. 40	\$5. 00
Smilax	. 30	. 90	3. 00
Snapdragon, Semi-Dwarf Maroon	. 50		
“ “ “ Pink	. 50		
“ “ “ Scarlet	. 50		
“ “ “ White	. 50		
“ “ “ Yellow	. 50		
“ “ “ Mixed	. 50	1. 40	5. 00
“ Tall Large Flowering, Garnet	. 45	1. 25	4. 50
“ “ “ Pink	. 45	1. 25	4. 50
“ “ “ Scarlet	. 45	1. 25	4. 50
“ “ “ White	. 45	1. 25	4. 50
“ “ “ Yellow	. 45	1. 25	4. 50
“ “ “ Fine Mixed	. 30	. 90	3. 00
Statice, Sinuata Mixed	. 25	. 75	2. 50
Stock, Beauty of Nice, Crimson	1. 75	5. 00	17. 50
“ “ “ “ Deep Blue	1. 75	5. 00	17. 50
“ “ “ “ Rose	1. 75	5. 00	17. 50
“ “ “ “ Rosy Lilac	1. 75	5. 00	17. 50
“ “ “ “ White	1. 75	5. 00	17. 50
“ “ “ “ Yellow	1. 75	5. 00	17. 50
“ “ “ “ Mixed	1. 00	2. 75	10. 00
“ Double Ten Weeks, Blood Red	1. 75	5. 00	17. 50
“ “ “ “ Bright Pink	1. 75	5. 00	17. 50
“ “ “ “ Purple	1. 75	5. 00	17. 50
“ “ “ “ White	1. 75	5. 00	17. 50
“ “ “ “ Yellow	1. 75	5. 00	17. 50
“ “ “ “ Mixed	. 80	2. 25	8. 00
Sunflower, Double Golden	. 15	. 40	1. 50
“ Stella	. 15	. 40	1. 50
“ Red and Gold. (Gaillardia Flowered)	. 25	. 75	2. 50
<b>Sweet Peas, see pages 44, 45, 46, 47.</b>			
Sweet William, Pure White	. 30	. 90	3. 00
“ “ Velvety Maroon	. 30	. 90	3. 00
“ “ Newport Pink	. 50		
“ “ (Dianthus barbatus) Single Mixed, fine.	. 20	. 60	2. 00
“ “ “ “ Double Mixed, extra	. 40	1. 10	4. 00
Verbena hybrida, Pink	1. 50	4. 00	15. 00
“ “ Blue	. 80	2. 25	8. 00
“ “ Scarlet	. 80	2. 25	8. 00
“ “ Pure White, large	. 80	2. 25	8. 00
“ “ Italian Striped	. 80	2. 25	8. 00
“ “ Fine Mixed, extra choice strain	. 60	1. 75	6. 00
Vinca, Pure White	. 60	1. 75	6. 00
“ Rosea	. 60	1. 75	6. 00
“ Rosea Alba	. 60	1. 75	6. 00
“ Mixed	. 50	1. 40	5. 00
Wallflower, Early Brown	. 25	. 75	2. 50
“ Mixed Double, extra fine	1. 50	4. 00	15. 00
Wistaria Chinensis	. 40		

	Per oz.	Per $\frac{1}{4}$ lb.	Per lb.
Zinnia, Giant Double, Crimson.....	\$ .50	\$1.75	\$ 5.00
" " " Orange.....	.50	1.40	5.00
" " " Pink.....	.50	1.40	5.00
" " " Purple.....	.50	1.40	5.00
" " " Scarlet.....	.50	1.40	5.00
" " " White.....	.50	1.40	5.00
" " " Mixed.....	.40	1.10	4.00
" Dahlia Flowered Mixed.....	1.25	3.50	12.50
" Double Quilled Mixed.....	1.00	2.75	10.00
" Lilliput Double Mixed.....	.60	1.75	6.00
" Mexicana Double Orange.....	.70		
" " Single Gypsy Girl.....	1.25		

## SWEET PEAS

Our stocks are also utely unsurpassed in selection, purity and vitality.

Not less than one-half pound at pound rate. Less than one-fourth pound will be charged at the ounce rate.

### SPRING FLOWERING SPENCER

	Tel. cipher	Per oz.	Per $\frac{1}{4}$ lb.	Per lb.
Early Aviator.....	<b>Walstead</b>	\$ .30	\$ .90	\$ 3.00
" Blanche Ferry.....	<b>Wakita</b>	.30	.90	3.00
" Blue Bird.....	<b>Waldrip</b>	.30	.90	3.00
" Columbia.....	<b>Walhond</b>	.30	.90	3.00
" Eldorado.....	<b>Wales</b>	1.00	2.75	10.00
" Glitters.....	<b>Walford</b>	.30	.90	3.00
" Harmony.....	<b>Walsh</b>	.30	.90	3.00
" Snowflake.....	<b>Weak</b>	.30	.90	3.00
" Superior Pink.....	<b>Webb</b>	2.50		
" Vulcan.....	<b>Weir</b>	.60	1.75	6.00
" Zvolanek's Rose.....	<b>Wilborn</b>	.30	.90	3.00

**Early Flowering Spencer, Mixed, a**  
 choice mixture of the best early flowering  
 varieties.....

**Wauneta** .20 .60 2.00



## SWEET PEAS—Continued

Our stocks are absolutely unsurpassed in selection, purity and vitality.

Not less than one-half pound at pound rate. Less than one-fourth pound will be charged at the ounce rate.

## SPENCER VARIETIES

## BICOLOR, LIGHT

	Tel. cipher	Per oz.	Per ¼ lb.	Per lb.
Blanche Ferry Spencer.....	Tulare.....	\$ .15	\$ .40	\$1.50
Dora.....	Yadkin... ..	.20	.60	2.00

## BLUE

Mrs. Tom Jones.....	Wellen... ..	.15	.40	1.50
---------------------	--------------	-----	-----	------

## BLUE, LIGHT

Colne Valley.....	Wexford... ..	.20	.45	1.50
-------------------	---------------	-----	-----	------

## BLUE, DARK

Jack Cornwall V. C.....	Wellford... ..	.15	.40	1.50
-------------------------	----------------	-----	-----	------

## BLUSH PINK

Valentine.....	Wellham... ..	.15	.40	1.50
----------------	---------------	-----	-----	------

## CARMINE

Doreen.....	Washoe... ..	.30	.90	3.00
-------------	--------------	-----	-----	------

## CERISE, PALE

Illuminator.....	Ward.....	.15	.40	1.50
------------------	-----------	-----	-----	------

## CERISE, DEEP

Charming.....	Welling... ..	.20	.60	2.00
---------------	---------------	-----	-----	------

## CERISE, SCARLET

Campfire.....	Wellston... ..	.30	.90	3.00
---------------	----------------	-----	-----	------

## CREAM

Dobbie's Cream.....	Wasatch... ..	.15	.40	1.50
---------------------	---------------	-----	-----	------

## CREAM PINK, PALE

Picture.....	Weirz... ..	.20	.60	2.00
--------------	-------------	-----	-----	------

## CREAM PINK, DEEP

Miss California.....	Welfare... ..	.35	1.00	3.50
----------------------	---------------	-----	------	------

## CRIMSON

Crimson King.....	Walton... ..	.20	.60	2.00
-------------------	--------------	-----	-----	------

King Edward.....	Watauga... ..	.15	.40	1.50
------------------	---------------	-----	-----	------

## LAVENDER

Austin Frederick.....	Yakima... ..	.15	.40	1.50
-----------------------	--------------	-----	-----	------

## MAROON, DARK

Warrior.....	Yell.....	.15	.40	1.50
--------------	-----------	-----	-----	------

## ORANGE PINK

George Shawyer.....	Wallace... ..	.15	.40	1.50
---------------------	---------------	-----	-----	------

(See Page 46 for mixture of Spencer sweet peas)

## SWEET PEAS—Continued

Our stocks are absolutely unsurpassed in selection, purity and vitality.

Not less than one-half pound at pound rate. Less than one-fourth pound will be charged at the ounce rate.

### SPENCER VARIETIES—Continued

	Tel. cipher	Per oz.	Per ¼ lb.	Per lb.
ORANGE SCARLET				
<b>Mammoth</b> .....	<b>Yetter</b> .....	\$ .40		
<b>The President</b> .....	<b>Walker</b> .....	.15	\$ .40	\$ 1.50
PICOTEE EDGED, PINK				
<b>Youth</b> .....	<b>Washita</b> ..	.40	1.10	4.00
PINK, PALE				
<b>Elfrida Pearson</b> .....	<b>Waskom</b> ..	.20	.55	1.75
PINK, CLEAR				
<b>Countess</b> .....	<b>Vance</b> .....	.15	.40	1.50
PINK, DEEP				
<b>Hawlmart Pink</b> .....	<b>Welona</b> ... .	.15	.40	1.50
PURPLE				
<b>Royal Purple</b> .....	<b>Waukon</b> ..	.15	.40	1.50
ROSE				
<b>Rosabelle</b> .....	<b>Waupun</b> ..	.15	.40	1.50
SALMON				
<b>Tangerine Improved</b> .....	<b>Wecota</b> ... .	.25	.75	2.50
SCARLET				
<b>Sunproof Scarlet</b> .....	<b>Wehrum</b> ..	.20	.55	1.75
STRIPED AND FLAKED				
<b>Senator</b> .....	<b>Wagoner</b> ..	.15	.40	1.50
WHITE				
<b>King White</b> .....	<b>Weld</b> .....	.15	.40	1.50
<b>Constance Hinton</b> .....	<b>Twiggs</b> ... .	.15	.40	1.50

**CHOICE MIXED.** This mixture of grandiflora varieties has been most carefully grown and will afford a splendid variety of blooms in the widest possible range of desirable colors.

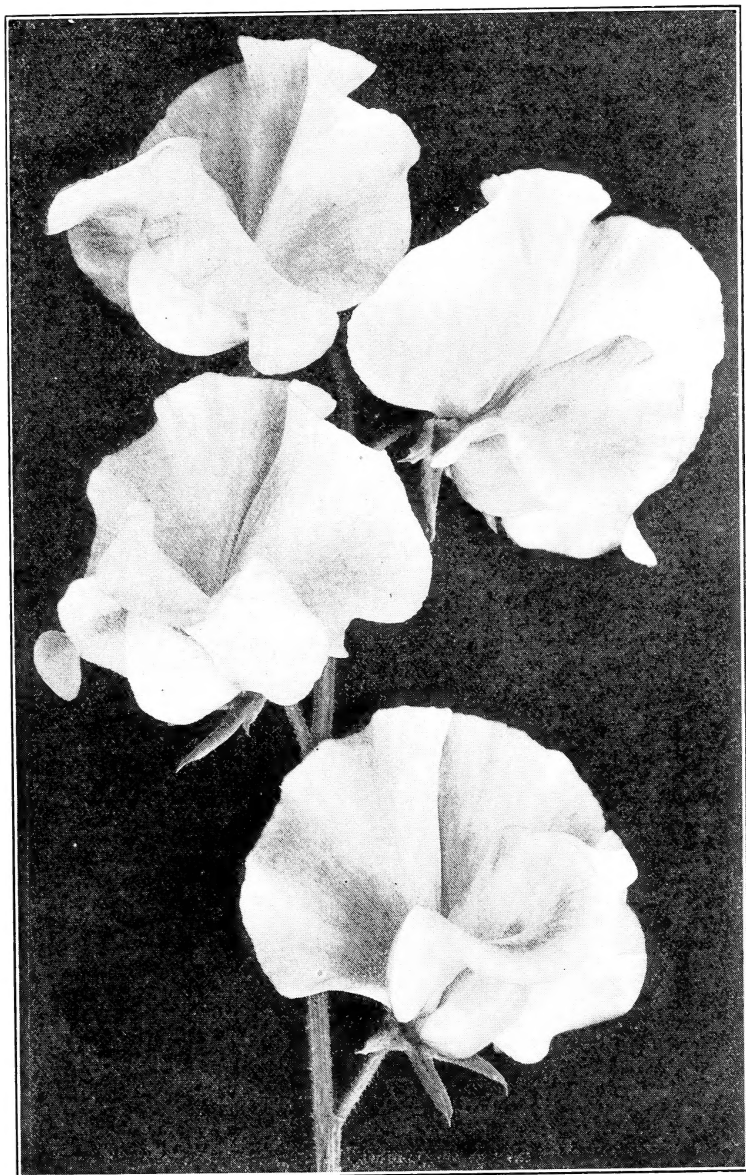
Tel. cipher Zapata. Per lb. 50c; Per 100 lbs. \$45.00

**SPENCERS MIXED.** In this splendid mixture will be found a wide range of colors of this comparatively new class. The flowers are of remarkably large size and wonderfully attractive form.

Tel. cipher Young. Per oz. 10c; Per lb. \$1.00

**FERRY'S SUPERB SPENCERS MIXED.** We make up this magnificent mixture by combining separate named Spencer varieties, each of which our trials have repeatedly shown to be the very best of its class. Unsurpassed as a mixture of this superb class and showing the most desirable range of colors and the finest forms. No better mixture in all the world than this.

Tel. cipher Zora. Per oz. 15c; Per lb. \$1.50



Spencer Sweet Peas

# GARDEN TOOLS

Send for Illustrated and Descriptive Catalogues of Garden Tools for 1927

Packed or boxed ready for shipment, and delivered at express office or depot at Detroit, Mich.

	Tel. cipher	Price
Planet Jr., No. 3, Hill and Drill Seeder.....	<b>Teho</b>	\$13. 15
" " 4, Combined Hill and Drill Seeder, Wheel Hoe, Cultivator and Plow.....	<b>Temere</b>	13. 50
" " 4, Hill and Drill Seeder, Plain (as a drill only).....	<b>Tempsa</b>	10. 70
" " 5, Hill and Drill Seeder. Built on the same lines as No. 3 Drill, but larger.....	<b>Tenabo</b>	15. 00
" " 25, Combined Hill and Drill Seeder and Double Wheel Hoe, Cultivator and Plow.....	<b>Teneo</b>	16. 15
" " 11, Double Wheel Hoe.....	<b>Tergo</b>	10. 35
" " 12, " " ".....	<b>Ternio</b>	8. 10
" " 13, " " ".....	<b>Tersus</b>	6. 00
" " 16, Single Wheel Hoe.....	<b>Tetini</b>	6. 75
" " 17, " " ".....	<b>Texo</b>	5. 80
" " 18, " " ".....	<b>Theca</b>	4. 35
" " 19, " " ".....	<b>Thesis</b>	4. 50
" " 38, " " " Disc Hoe, Cultivator and Plow.....	<b>Theto</b>	6. 75
The Iron King Seed Drill.....	<b>Tiara</b>	10. 15
" " " " with Fertilizer Attachment.....	<b>Timeo</b>	13. 50
Excelsior Weeding Hook.....	<b>Titubo</b>	per ten 1. 50
Haseltine Hand Weeder and Scraper.....	<b>Toga</b>	" " 3. 00
Pressed Steel Garden Trowel.....	<b>Tonum</b>	" " 1. 50

## SEED BAGS

We annually manufacture for our own use millions of Seed Bags and are in a position to offer to the trade first quality ready made bags at prices as reasonable as the same grade of goods can be purchased anywhere.

*Samples of all sizes furnished on application.*

### Printing Extra, at Cost

No.			Per 1000
No. 1	Miniature Pockets, Canary.....	7/8 x 1 3/4 inches.....	\$ .75
" 3	White Coated Paper.....	2 1/8 x 3 1/4 ".....	.85
" 7	" " ".....	3 1/8 x 4 1/2 ".....	1. 50
" 12	" " "..... 1 oz.....	4 x 4 3/4 ".....	2. 50
" 11	Manila, Gummed..... 1/2 oz.....	2 1/4 x 3 1/2 ".....	1. 00
" 13	" " "..... 1 oz.....	2 1/2 x 4 1/4 ".....	1. 25
" 15	" " "..... 2 oz.....	3 1/8 x 5 1/2 ".....	1. 50
" 33	Brown "Kraft" Paper..... 1 pint.....	5 x 7 1/2 ".....	4. 50
" 36	" " "..... 1 pound.....	5 1/2 x 8 ".....	5. 00
" 39	" " "..... 1 quart.....	6 1/2 x 9 1/4 ".....	6. 00
" 42	" " "..... 3 pints.....	7 1/2 x 10 1/4 ".....	7. 00
" 45	" " "..... 2 quarts.....	8 1/2 x 11 1/4 ".....	8. 00
" 48	" " "..... 3 quarts.....	9 1/2 x 12 1/2 ".....	10. 00
" 51	" " "..... 4 quarts.....	10 1/2 x 14 1/2 ".....	12. 50
" 54	" " "..... 6 quarts.....	11 3/4 x 16 1/4 ".....	15. 00
" 57	" " "..... 8 quarts.....	13 x 18 ".....	17. 00

*Bags Nos. 1 to 15 have flaps; only Nos. 11, 13 and 15 are gummed.*

# TELEGRAPHIC CIPHER

By making use of the following Telegraphic words for weights, together with the Telegraphic Cipher attached to each article in this list, our customers will be able to order by wire at trifling expense. The Telegraphic words for QUANTITIES must always PRECEDE the cipher words for Seeds, but if the same quantity of several articles is needed, the word for that quantity should be placed before the word for the first article only. For example:

“**Freight Adjust Lagrange, Lemhi, Lorain.**” Means “Ship by first freight One Hundred Pounds each of Extra Early, Telephone and Champion of England Peas.”

“**Express Abort Caddo, Cannon, Catoosa.**” Means “Send by first express Two Pounds each of Early Jersey Wakefield, Early Winnigstadt and Ferry's Premium Late Flat Dutch Cabbage.”

---

## TELEGRAPHIC WORDS FOR WEIGHTS

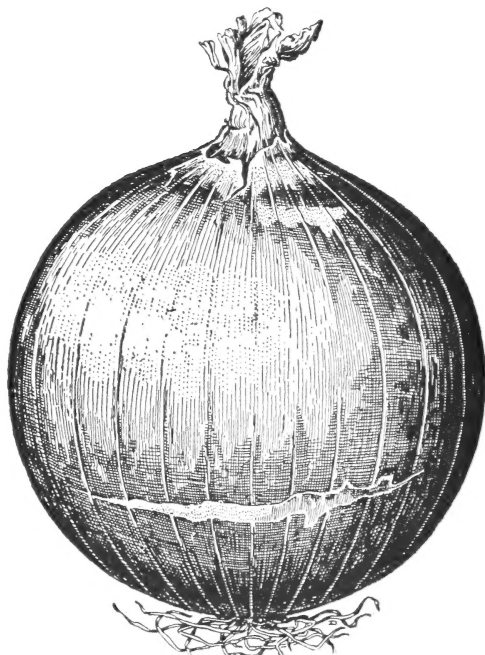
---

Quantity	POUNDS	Quantity	POUNDS	Quantity	POUNDS
1/4	Abhor	75	Adjoin	725	Agnate
1/2	Abide	80	Adjourn	750	Alarm
3/4	Abolish	85	Adjudge	775	Albeit
1	Abound	90	Adjunct	800	Alcove
2	Abort	95	Adjure	825	Alert
3	Abrade	100	Adjust	850	Alight
4	Abrupt	120	Admis	875	Allay
5	Abrogate	125	Admire	900	Allege
6	Abscond	150	Admit	925	Alloy
7	Absent	175	Admix	950	Allude
8	Absolve	180	Adobe	975	Allure
9	Absorb	200	Adopt	1000	Alpaca
10	Abstain	225	Adore	1200	Almond
11	Abstract	240	Adolescent	1500	Alpine
12	Absurd	250	Adrift	1800	Alms
13	Abuse	275	Adult	2000	Alter
14	Abcede	300	Advantage	2400	Alum
15	Accent	325	Advent	2500	Alvine
16	Acclaim	350	Adverse	3000	Amass
17	Access	360	Aerolite	3500	Amaze
18	Accost	375	Aerial	4000	Ambush
19	Account	400	Affect	4500	Amend
20	Accredit	420	Affair	5000	Amenity
21	Accuracy	425	Affirm	5500	Amiss
22	Accuse	450	Affix	6000	Ample
23	Acquaint	475	Afford	6500	Amuse
24	Acquire	480	Affiant	7000	Analyze
25	Acquit	500	Affray	7500	Anchor
30	Actuate	525	Affront	8000	Ancient
35	Acute	540	Afflux	8500	Adroid
40	Adage	550	Afloat	9000	Angler
45	Adapt	575	Afoot	9500	Anile
50	Addict	600	Afore	10000	Anthem
55	Addle	625	Afraid	15000	Antic
60	Adduce	650	Against	20000	Antler
65	Adept	675	Aggress	25000	Antelope
70	Adhere	700	Aghast	36000	Antidote

---

NOTE.—The above Code for TELEGRAMS only—Not for orders by mail.

WHOLESALE PRICE LIST  
— OF —  
**SEEDS IN BULK**  
1927



Our excellent strains of onion are the result of many years of breeding at our Oakview Stock Seed Farms. The stocks we offer are unsurpassed by any offered elsewhere.

**D. M. FERRY & CO.**

DETROIT, MICHIGAN